



THE INAUGURATION OF John A. Fry
FOURTEENTH PRESIDENT *of* DREXEL UNIVERSITY

ACADEMIC SYMPOSIA

APRIL 14, 2011

Bossone Research Enterprise Center
Mitchell Auditorium

TABLE OF CONTENTS

Symposium One

9–10:15am · Bossone Research Enterprise Center, Mitchell Auditorium

Autism: The Public Health Response. 1

Symposium Two

10:30–12pm · Bossone Research Enterprise Center, Mitchell Auditorium

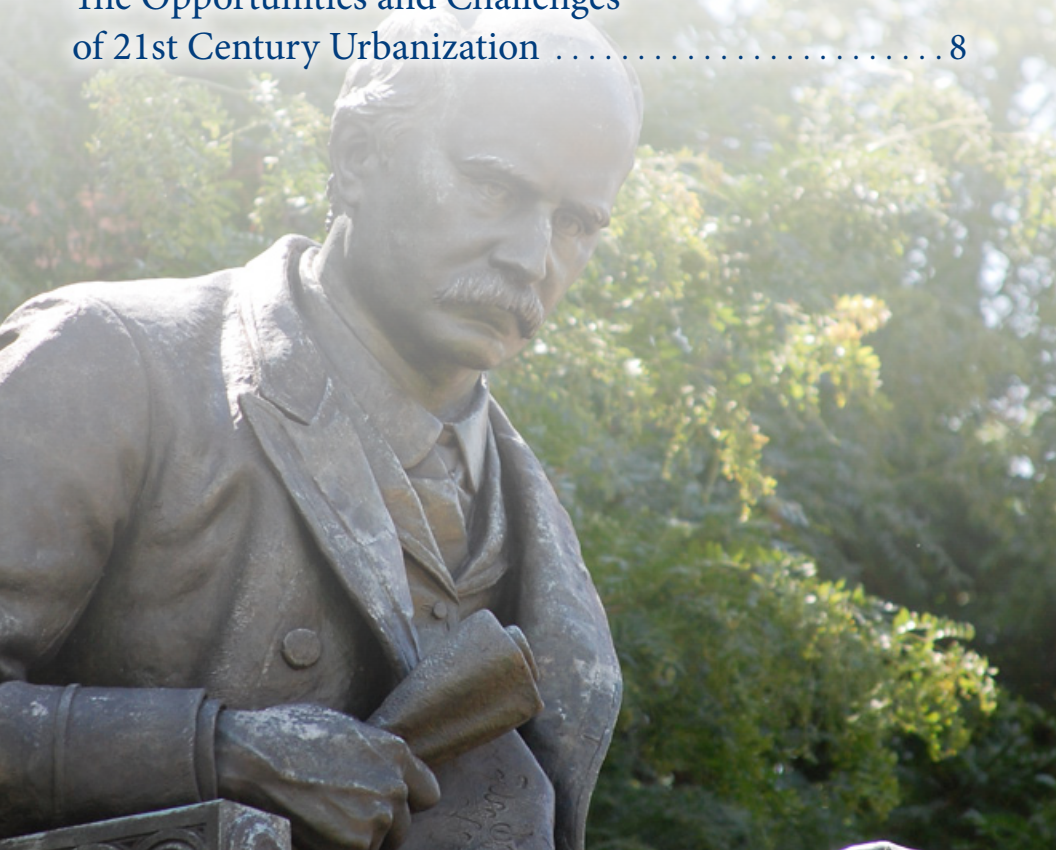
**Urban Challenges, Urban Solutions: Drexel’s
Impact on 21st Century Priorities 4**

Keynote Address: Judith Rodin, Ph.D.

President, the Rockefeller Foundation

2:30–4pm · Bossone Research Enterprise Center, Mitchell Auditorium

**The Opportunities and Challenges
of 21st Century Urbanization 8**



SYMPOSIUM ONE

AUTISM: THE PUBLIC HEALTH RESPONSE

This symposium will provide critical perspectives on how autism is affecting US society and will show how the public health sciences can work to improve the lives of individuals with autism and their families. Topics will include: novel autism risk factor identification, autism early diagnosis and intervention, adolescent and adult autism outcomes, and strategies for scientifically and socially responsible autism science communication.



Craig J. Newschaffer, Ph.D. [Moderator]

Professor and Chair

Department of Epidemiology and Biostatistics

Drexel University School of Public Health

Dr. Craig J. Newschaffer is an epidemiologist studying the causes of autism spectrum disorders. He directs the Early Autism Risk Longitudinal Investigation (EARLI), an NIH Autism Center of Excellence project following a cohort of mothers of children with autism at the start of subsequent pregnancies in order to reveal environmental and genetic autism risk factors. Dr. Newschaffer also leads a project for NIH's National Childrens' Study evaluating streamlined approaches to confirming autism cases in a research study setting which could also have eventual application for autism diagnosis in the community. He is a member of the Science Advisory Board for Autism Speaks and serves on the Congressionally Directed Medical Research Program's Autism Research Program Integration Panel.

Dr. Newschaffer, a fellow of the American College of Epidemiology, received his Ph.D. in Epidemiology from The Johns Hopkins University and MS in Health Management and Policy from the Harvard University School of Public Health.



Igor Burstyn, Ph.D.

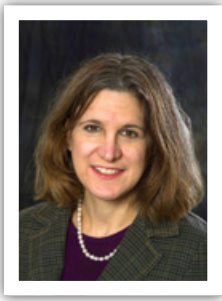
Associate Professor and Director of Research

Department of Environmental and Occupational Health

Drexel University School of Public Health

Dr. Igor Burstyn is an educator and researcher in the field of environmental and occupational health, with training in epidemiology and occupational hygiene. His work focuses on the identification of sources and the health impacts of occupational and environmental exposures, with particular interest in the effect of environmental in utero exposures on health of pregnant women and their children. Dr. Burstyn recently directed epidemiological studies of autism in the Canadian province of Alberta that identified problems with access to care in marginalized communities

and provided first direct evidence that hypoxia at birth puts boys at greater risk of autism. Dr. Burstyn received his Ph.D. in Environmental and Occupational Health from Utrecht University in the Netherlands, his MS in Occupational Hygiene from the University of British Columbia, and his BS in Microbiology from the University of British Columbia.



Felicia Hurewitz, Ph.D.

*Assistant Professor
Department of Psychology
Drexel University College of Arts and Sciences*

Dr. Felicia Hurewitz specializes in developmental psychology, sentence processing, language acquisition, autism spectrum disorders, numerical cognition and dyscalculia, and computerized interventions for learning. She serves as the Director of the Autism Support Program at the Drexel University College of Arts and Sciences. She has published numerous articles in peer reviewed journals, and presented research on autism and child development at conferences nationwide.

Dr. Hurewitz received her Ph.D. in Psychology from the University of Pennsylvania, and completed postdoctoral research at the Rutgers Center for Cognitive Science and the Institute for Research in Cognitive Science at the University of Pennsylvania. She received a BA in Linguistics from the University of Michigan.



Brian K. Lee, Ph.D.

*Assistant Professor
Department of Epidemiology and Biostatistics
Drexel University School of Public Health*

Dr. Brian K. Lee is focused on examining the epidemiology of neurological development, maintenance and decline. His particular research focuses on prenatal environmental exposures and autism risk, neighborhoods and psychosocial “stress” in the cognitive decline of older adults, gene-environment interaction, maternal antibody exposure in utero and fetal outcomes. In addition to his etiological research, he is interested in epidemiological machine learning algorithms, and automated data extraction techniques for structured and unstructured data.

Dr. Lee received his Ph.D. and HMS in Epidemiology from Johns Hopkins University and graduated cum laude with a AB in Biological Anthropology from Harvard College.



Andy Shih, Ph.D.

*Vice President for Scientific Affairs
Autism Speaks*

Dr. Andy Shih works closely with members of Autism Speaks' Board, Scientific Advisory Committee, senior staff and volunteer leadership to develop and implement the organization's research program. He oversees the etiology portfolio, which includes genetics, environmental sciences and epidemiology, as well as lead Autism Speaks' international scientific development efforts, including the Global Autism Public Health Initiative.

Dr. Shih's research background includes published studies in gene identification and characterization, virus-cell interaction and cell-cycle regulation. He was instrumental in the cloning of a family of small GTPases involved in cell-cycle control and nuclear transport, and holds three patents on nucleic acids-based diagnostics and therapeutics. Dr. Shih earned his Ph.D. in cellular and molecular biology from New York University.



Michael Yudell, Ph.D., M.P.H.

*Assistant Professor
Department of Community Health and Prevention
Drexel University School of Public Health*

Dr. Michael Yudell is a researcher in the fields of ethics, genomics and history of public health. His work focuses on the history, risk communication and ethics of autism spectrum disorders, as well as emergency preparedness, vaccines and the history of the race concept in biology. He has published two books on the mapping of the human genome, and is currently writing a history of autism.

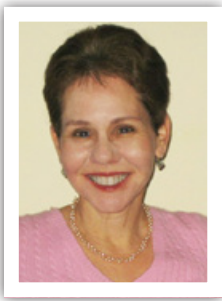
Dr. Yudell has published numerous articles in both academic journals and popular magazines, and regularly presents at conferences nationwide. He also serves on the Ethics of Vaccines Project and is a member of the Newborn Screening Advisory Board in the Department of Health in the Commonwealth of Pennsylvania.

Dr. Yudell received his Ph.D. and M.P.H. in Sociomedical Sciences from Columbia University, MPhil in American History from the City University of New York, and BA in History and Soviet Studies from Tufts University.

SYMPOSIUM TWO

URBAN CHALLENGES, URBAN SOLUTIONS: DREXEL'S IMPACT ON 21ST CENTURY PRIORITIES

Drexel University has long grappled with social problems that defy easy solutions due to perpetually changing circumstances, complicated interdependencies, or unclear parameters. Panelists will present fresh perspectives and innovative approaches to addressing urban violence, childhood hunger, comprehensive health care, and sustainability. Together they demonstrate how Drexel University continues to make a tangible contribution to our region and to the resolution of problems that have an impact around the globe.



Paula Marantz Cohen, Ph.D. [Moderator]

Distinguished Professor

Department of English and Philosophy

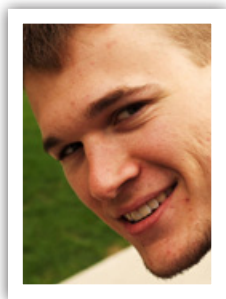
Drexel University College of Arts and Sciences

Host, The Drexel Interview

Co-Editor, Journal of Modern Literature

Dr. Paula Marantz Cohen is the author of eight books and numerous essays on literature, film, and culture, and is the host of *The Drexel Interview*, an award-winning television series that premiered in 2004 and that is now broadcast on over 300 public television and university-affiliation stations throughout the country. Dr. Cohen's most recent academic book, *Silent Film and the Triumph of the American Myth*, was selected as a Choice Outstanding Book; her first novel, *Jane Austen in Boca*, was a Page-Turner of the Week in *People Magazine*; and her latest novel, *What Alice Knew: A Most Curious Tale of Henry James and Jack the Ripper*, is a Book of the Month Club and Mystery Guild selection. She is a co-editor of *jml: Journal of Modern Literature* and a winner of the Lindback Award for Outstanding Teaching.

Dr. Cohen received her Ph.D. in English from Columbia University and her BA in English and French from Yale University.



Clinton Burkhart

Lindy Scholars Program

Student, BS in Biological Sciences

Drexel University College of Arts and Sciences

Clinton Burkhart is a leading Lindy Scholar Adviser with Drexel University's Center for Civic Engagement. Last year, Clinton was awarded the Center for Civic Engagement's Undergraduate Student of the Year honor for his work with middle school students from the West Philadelphia area. He and his fellow Advisers tutor the students in math and literacy after school and support the students outside of the classroom through mentoring. The Lindy Scholars Program is aimed at increasing the high school graduation rate of students in the School District of Philadelphia, hoping to give them an equal chance at an excellent education. Clinton will be graduating with a BS in Biological Sciences this Spring.



Mariana Chilton, Ph.D., M.P.H.

Associate Professor

Department of Health Management and Policy

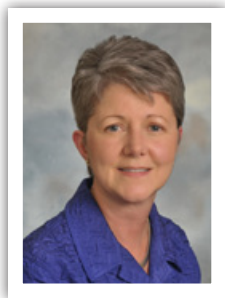
Drexel University School of Public Health

Principal Investigator, Philadelphia GROW Project

Director, Witnesses to Hunger

Dr. Mariana Chilton is the Principal Investigator for The Center for Hunger-Free Communities, formally known as The Philadelphia GROW Project—a nutrition and growth initiative for children and their families—and Co-Principal Investigator of Children's HealthWatch. In 2008, she founded Witnesses to Hunger to increase women's participation in the national dialogue on hunger and poverty. Dr. Chilton investigates the health impacts of hunger and food insecurity among young children ages zero to three. Her work spans across a variety of issues that affect low-income families to address nutritional wellbeing, public assistance participation, housing instability, and employment. She has testified before the U.S. House of Representatives and the U.S. Senate Agriculture Committees to inform policy decisions regarding child nutrition and other anti-poverty policies. She has also served as an advisor to the children's program *Sesame Street* and to the Institute of Medicine.

Dr. Chilton received her Ph.D. from the University of Pennsylvania, an M.P.H. in Epidemiology from the University of Oklahoma, and an AB from Harvard University. Her numerous awards include the Young Professional Award in Maternal and Child Health from the American Public Health Association, the Unsung Hero Award for Improving the Lives of Women and Girls from Women's Way, and the National Lindback Award for Teaching Excellence. Her work has been featured in the *Washington Post*, the *Philadelphia Inquirer*, and on public radio and *CBS National News*.



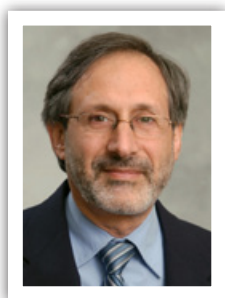
Patricia Gerrity, Ph.D., R.N., FAAN

*Professor and Associate Dean for Community Programs
Drexel University College of Nursing and Health Professions*

Dr. Patricia Gerrity is known for her work in promoting health in diverse urban communities. She received more than \$15 million in grants from local, state and federal sources, including the U.S. Health Resources and Services Administration, the PA State Department of Health, the Independence Foundation, and the Pew Charitable Trusts. She also serves as the Director of the Eleventh Street Family Health Services of Drexel University, a nurse-managed, federally qualified health center in North Philadelphia.

Dr. Gerrity completed a prestigious three-year fellowship through the Robert Wood Johnson Executive Nurse Fellows Program. From 1998-2000 she served as a fellow at the International Center for Health Leadership Development at the University of Illinois at Chicago. A co-founder of the National Nursing Centers Consortium, she served as both a grant reviewer and consultant for nurse-managed health centers initiatives.

Dr. Gerrity earned a Ph.D. in Health Planning from the University of Pennsylvania and a MS and BS in Nursing from the University of Pennsylvania. Elected to Fellowship in the American Academy of Nursing in 1995, she was named an “Edge Runner” by the Academy in 2008.



Jeffrey M. Jacobson, M.D.

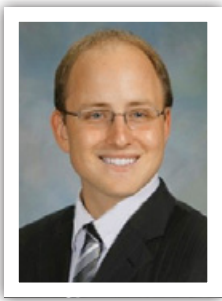
*Professor of Medicine
Professor of Microbiology and Immunology
Chief, Division of Infectious Diseases and HIV Medicine
Drexel University College of Medicine
Director, Partnership Comprehensive Care Practice*

Dr. Jeffrey M. Jacobson is board certified in internal medicine and infectious diseases by the American Board of Internal Medicine, and currently directs Drexel’s Partnership Comprehensive Care Practice, the largest HIV care program in Philadelphia. He received his M.D.

from Cornell University, and completed his medical residency and infectious disease fellowship training at Mount Sinai Medical Center in New York City.

Dr. Jacobson has chaired and co-chaired numerous clinical research studies and has published extensively in peer-reviewed journals. His research interests include the immunology and pathogenesis of HIV and other chronic viral infections, as well as the development of novel chemotherapeutic and immune-based therapies for treatment and prevention. A prime research focus has been on modulating the immune response to achieve better host control of viral replication and to reduce the pathologic consequences of infection, with the ultimate goal of achieving a “functional” cure. Another focus has been on the development of monoclonal antibodies targeting the pathogen-host cell interaction. Having previously chaired the Immunology Committee, the Translational Research and Drug Development Committee, and other committees, he currently co-chairs the Long Acting Drug Task Force of the NIAID-funded AIDS Clinical Trials Group (ACTG), which has been exploring the potential role of monoclonal antibodies and nanotechnology in creating anti-HIV

treatments with durable activity. Such therapies would be particularly useful for patients who, for personal or psychosocial reasons, are unable to adhere to daily oral regimens.

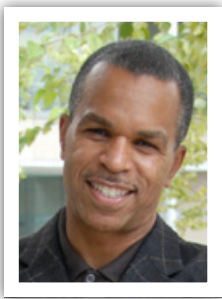


Cody A. Ray, LEED AP

*President, Drexel Smart House
Student, BS/MS in Electrical Engineering
Drexel University College of Engineering*

Cody A. Ray is leading the transformation of a historic home located in West Philadelphia into a living laboratory for student research. Since joining Drexel Smart House in 2007, he has led multidisciplinary student teams to develop new technologies that improve the way people live, balancing the demands and comforts of modern urban living with the need to reduce humanity's environmental footprint.

Mr. Ray, the Technology Director for Philly Startup Leaders, acts as a sustainability advisor for Freedom's Way Foundation in Ivyland, PA, and has served on the Sustainable Design Competition Committee for the Delaware Valley Green Building Council. Mr. Ray is an Accredited Professional in the US Green Building Council's Leadership in Energy and Environmental Design program. He is completing his BS and MS in Electrical Engineering at Drexel University.



John A. Rich, M.D., M.P.H.

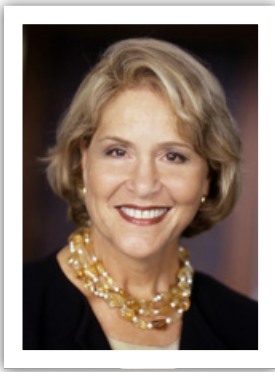
*Professor and Chair
Department of Health Management and Policy
Drexel University School of Public Health*

Dr. John A. Rich is a leader in the field of public health, and his work has focused on serving one of the nation's most ignored and underserved populations—African-American men in urban settings. In 2006, Dr. Rich was granted a MacArthur Foundation Fellowship. In awarding this distinction, the Foundation cited his work to design “new models of health care that stretch across the boundaries of public health, education, social service, and justice systems to engage young men in caring for themselves and their peers.” Prior to joining the faculty at Drexel University, Dr. Rich served as the medical director of the Boston Public Health Commission.

Dr. Rich earned his M.D. from Duke University, his M.P.H. from Harvard University, and his AB in English from Dartmouth College. He completed his internship and residency at the Massachusetts General Hospital and was a Fellow in general internal medicine at Harvard University. He received an honorary Doctor of Science degree from Dartmouth College in 2007 and now serves on its Board of Trustees. In 2009, Dr. Rich was inducted into the Institute of Medicine of the National Academy of Sciences. His recently published book about urban violence *Wrong Place, Wrong Time: Trauma and Violence in the Lives of Young Black Men* has drawn critical acclaim.

KEYNOTE ADDRESS

The Opportunities and Challenges of 21st Century Urbanization



Judith Rodin, Ph.D.

President, the Rockefeller Foundation

President Emerita, University of Pennsylvania

Dr. Judith Rodin is the president of the Rockefeller Foundation, one of the world's leading philanthropic organizations. She was previously president of the University of Pennsylvania, and provost of Yale University. She was the first woman named to lead an Ivy League institution and is the first woman to serve as the Rockefeller Foundation's president in its nearly 100-year history.

Since joining the Rockefeller Foundation in 2005, Dr. Rodin has recalibrated its focus to meet the challenges of the 21st century, and today the Foundation supports and shapes innovations, to strengthen resilience to risks and ensure that more people have access to the benefits of globalization. Dr. Rodin is the author of more than 200 academic articles and has written or co-written 12 books. She has received over 16 honorary degrees and serves as a member of the board for several leading corporations and non-profits. Dr. Rodin is a graduate of the University of Pennsylvania and earned her Ph.D. in Psychology from Columbia University.





THE INAUGURATION OF John A. Fry

drexel.edu/inauguration