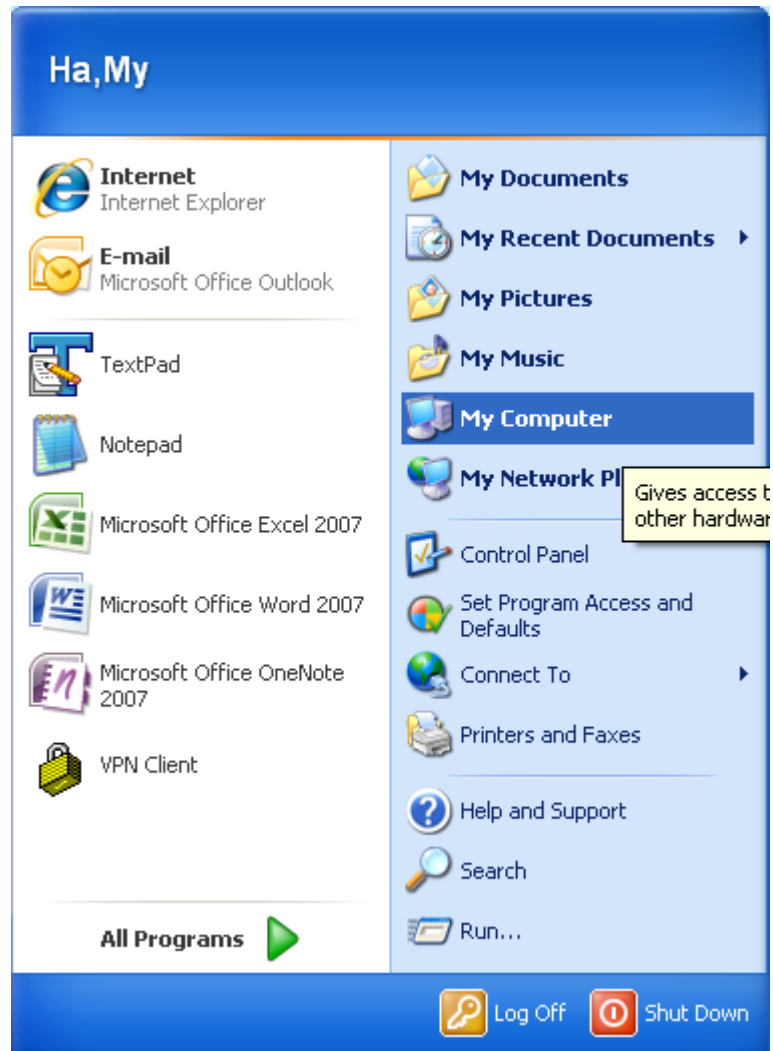
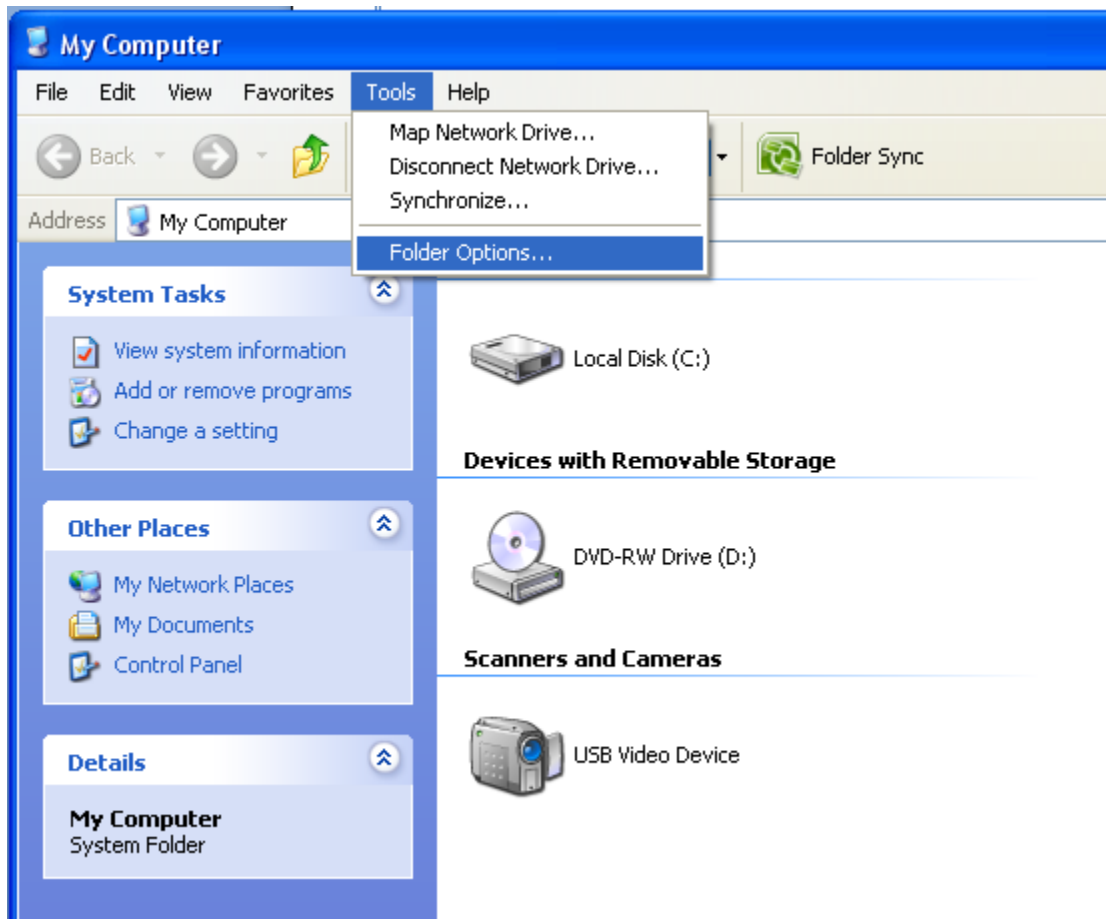


# Instructions on associating .TIFF & .TIF file types for Nolij

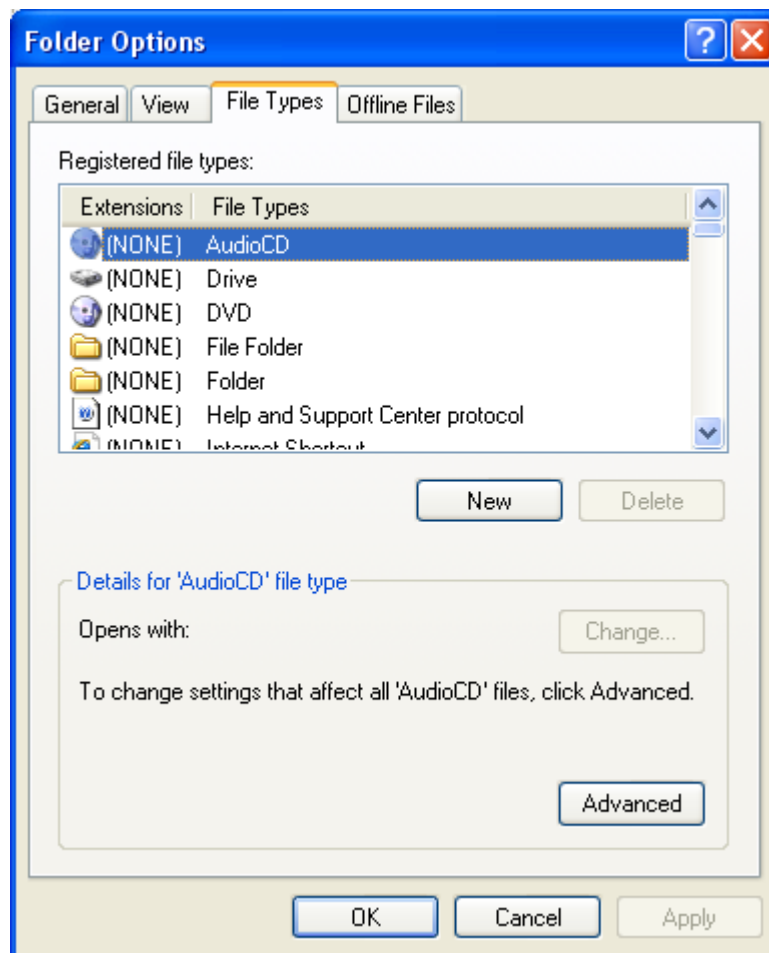
- Click on **My Computer**



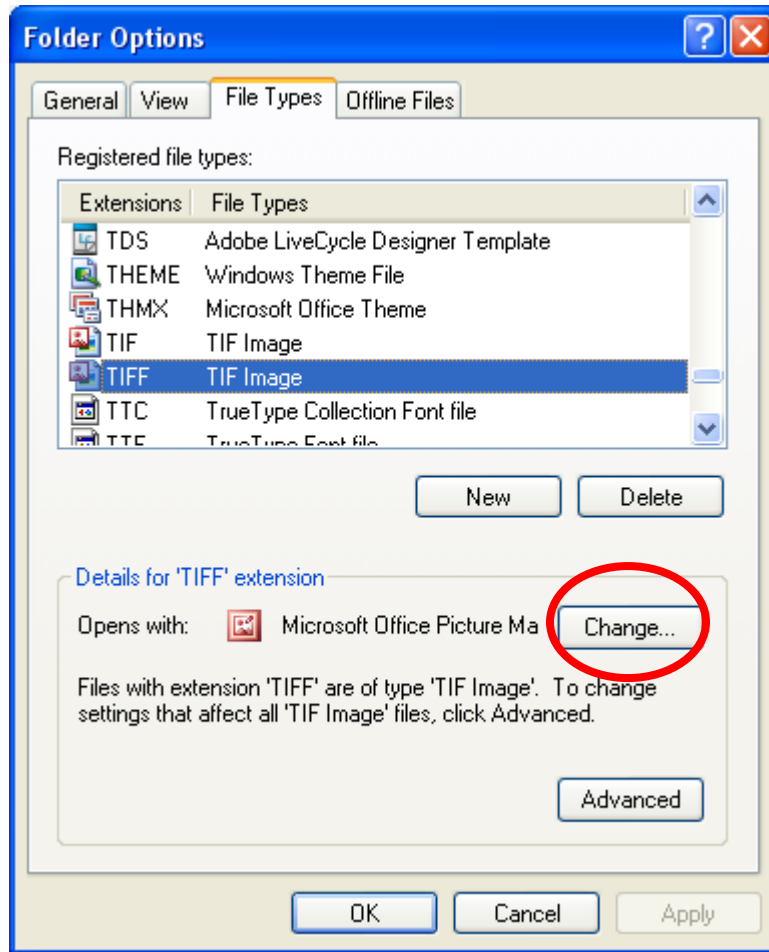
- Go to the **Tools** menu
- Select **Folder Options**



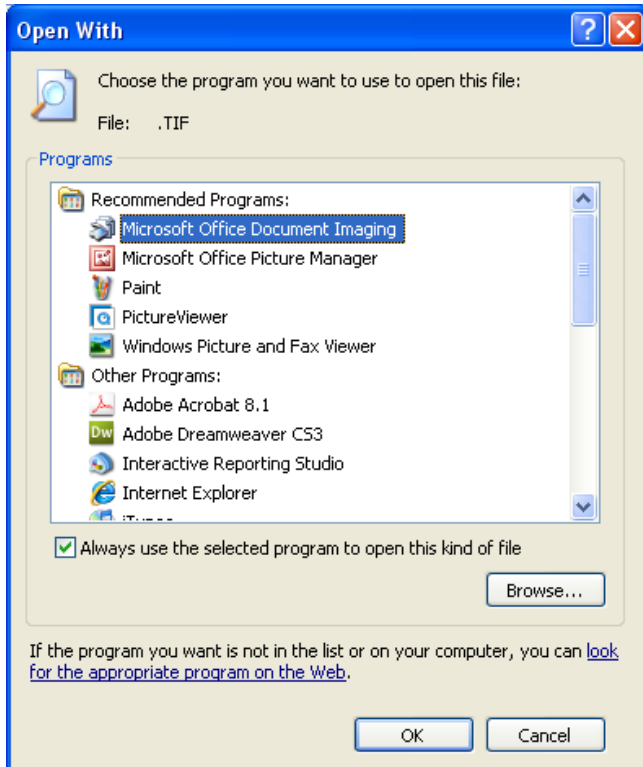
- Click on the **File Types** tab.



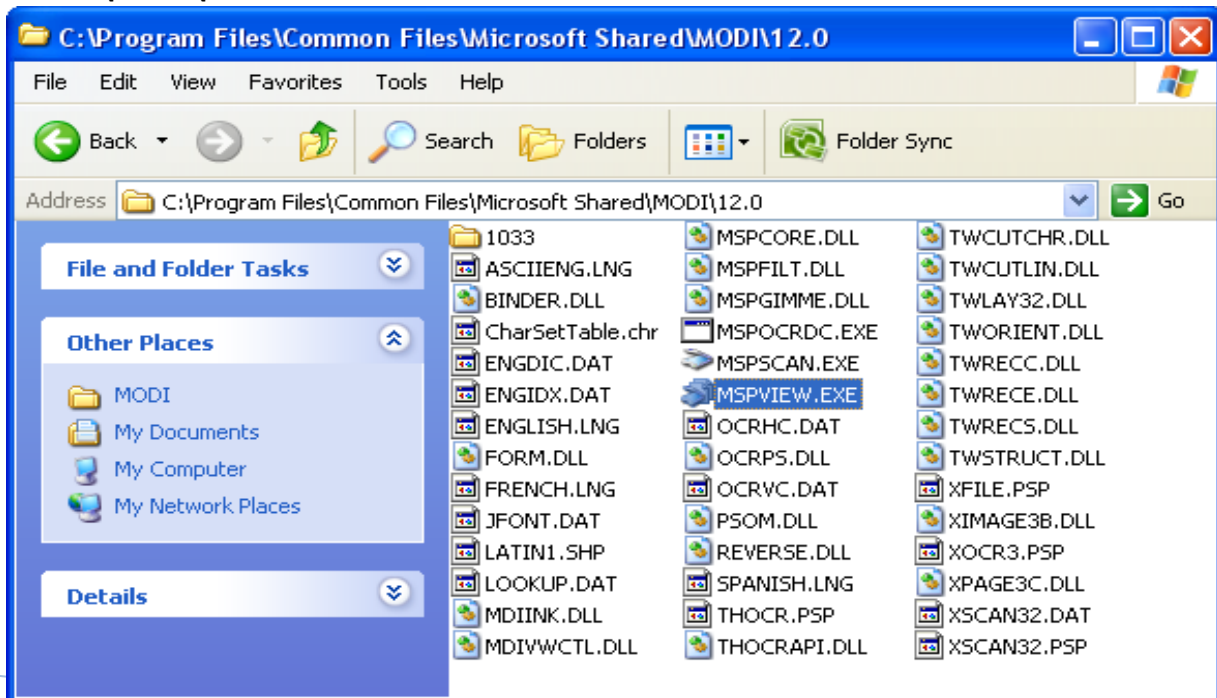
- In the Extensions column, scroll down until you reach **TIFF**.
- Once **TIFF** is highlighted click **Change**



Select 'Microsoft Office Document Imaging' if available



If 'Microsoft Office Document Imaging' is installed and is not in the programs list, click the 'Browse' button and navigate to this file path **C:\Program Files\Common Files\Microsoft Shared\MODI\12.0** Select **MSPVIEW.EXE**



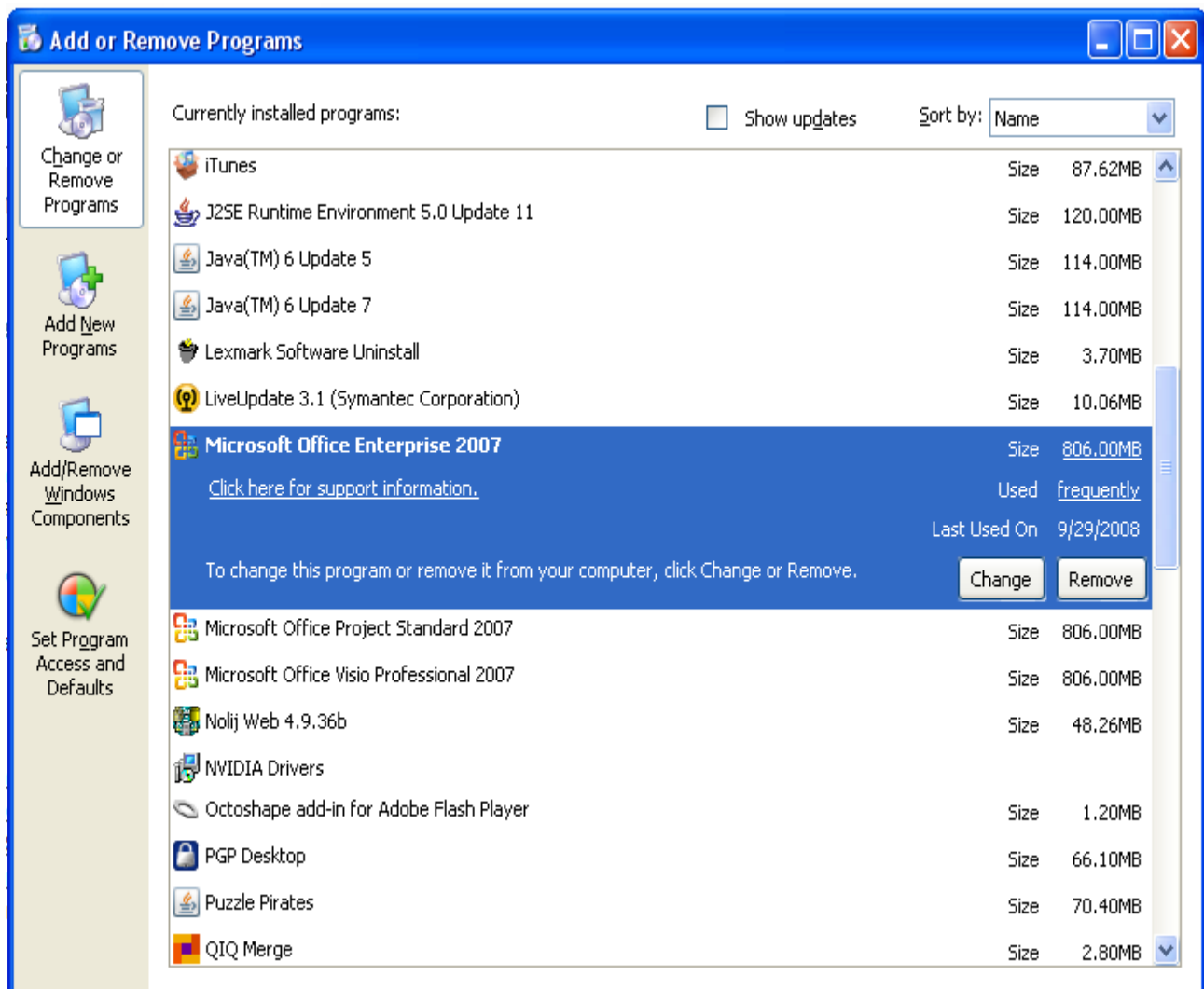
# Adding Microsoft Office Document Imaging for Microsoft Office 2007

If you do not have Microsoft Office Document Imaging and the current version of your Microsoft Office is 2007. Please follow the instructions below to install it to your computer.

**Start > Control Panel**

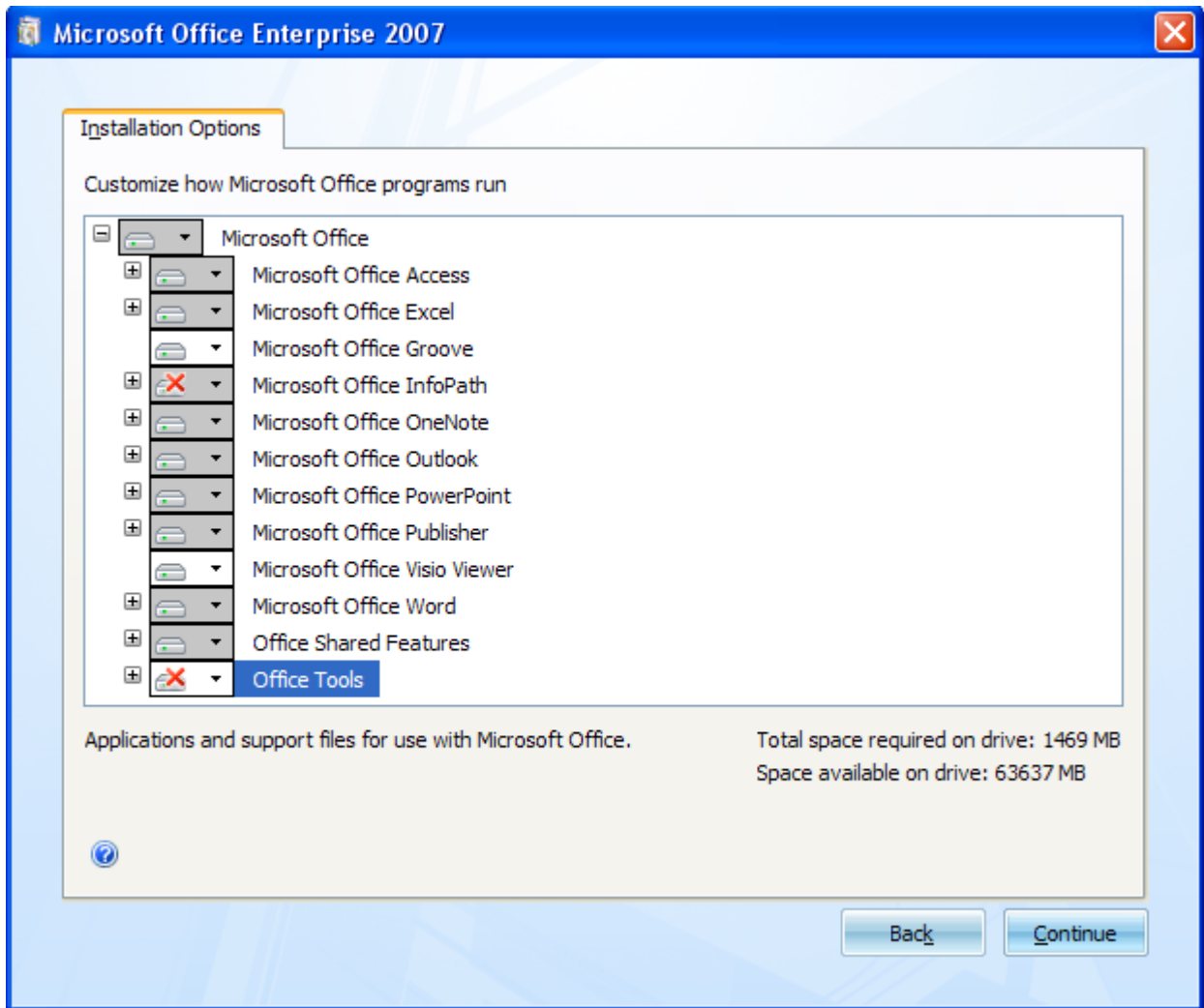
**Select > Add/Remove Programs**

Select '**Microsoft Office Enterprise 2007**' click **Change**



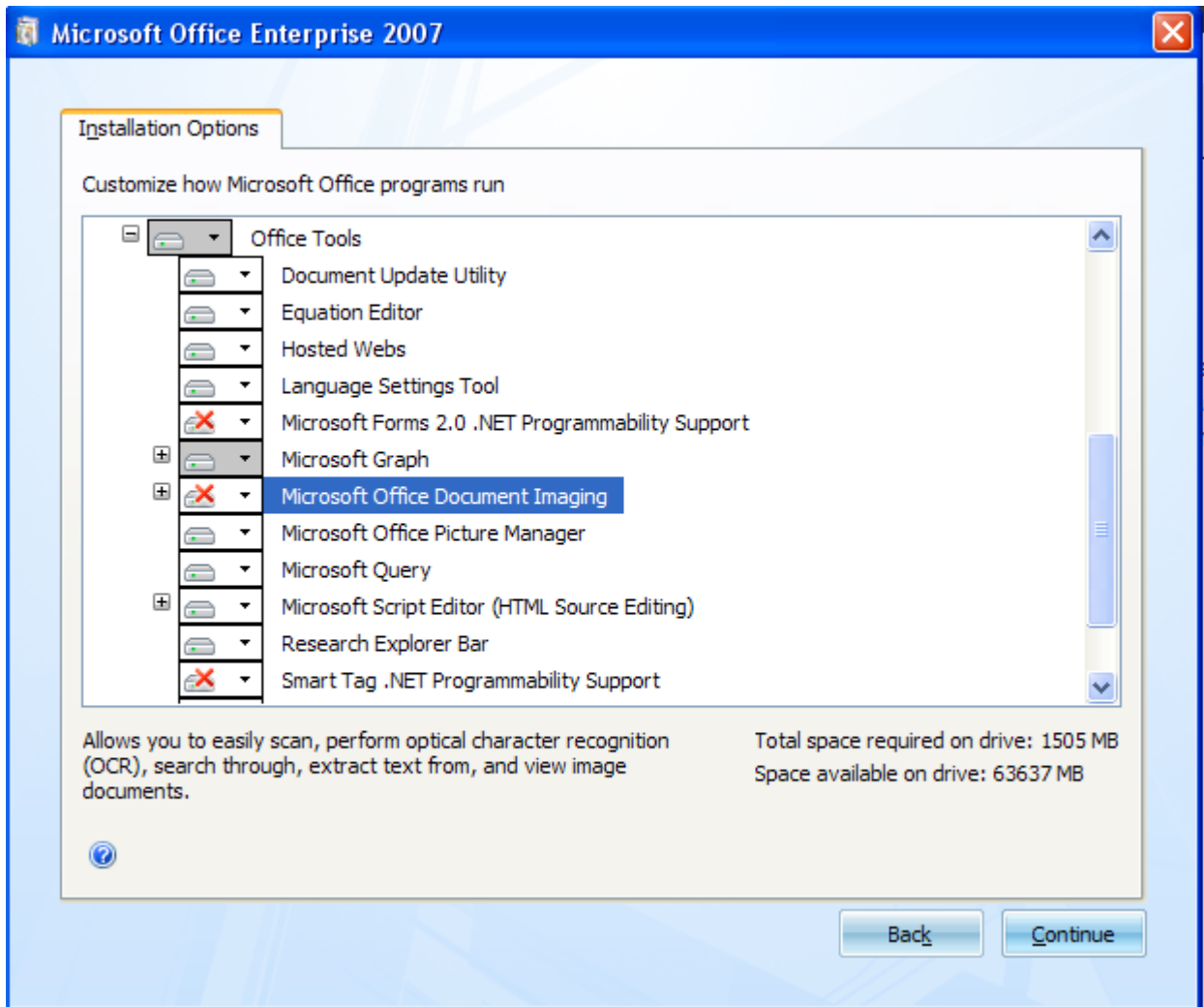


Add or Remove Features is selected by default, click **Continue**

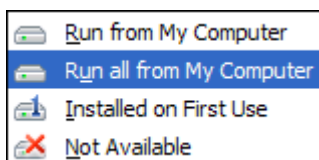


Next click the plus sign to expand the options for '**Office Tools**'



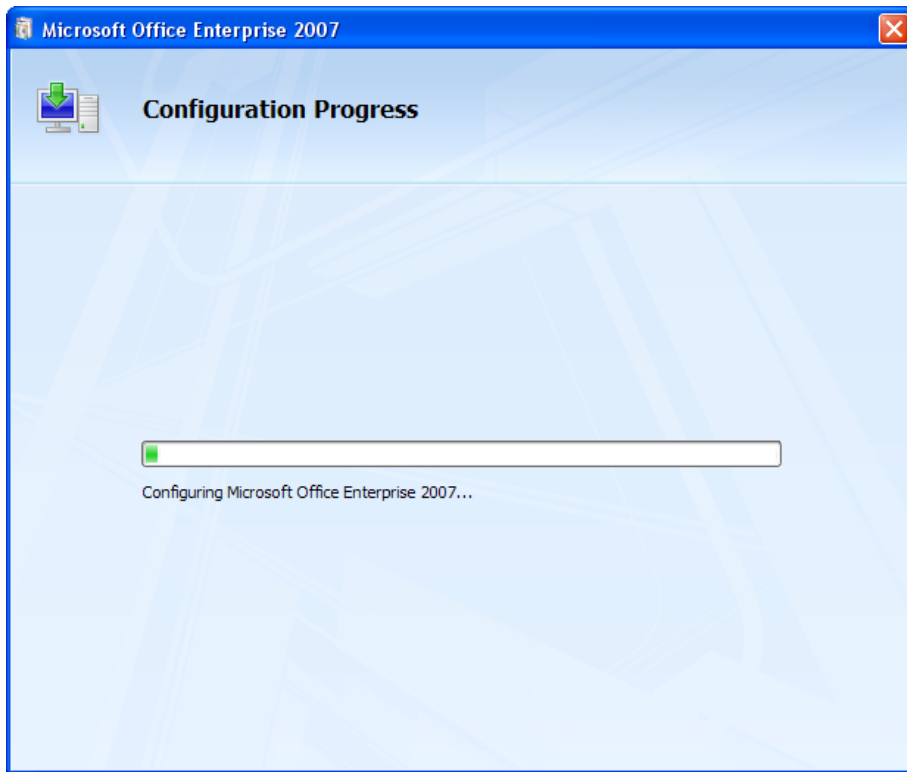


Click the down arrow to the left of '**Microsoft Office Document Imaging**' the following options will appear:



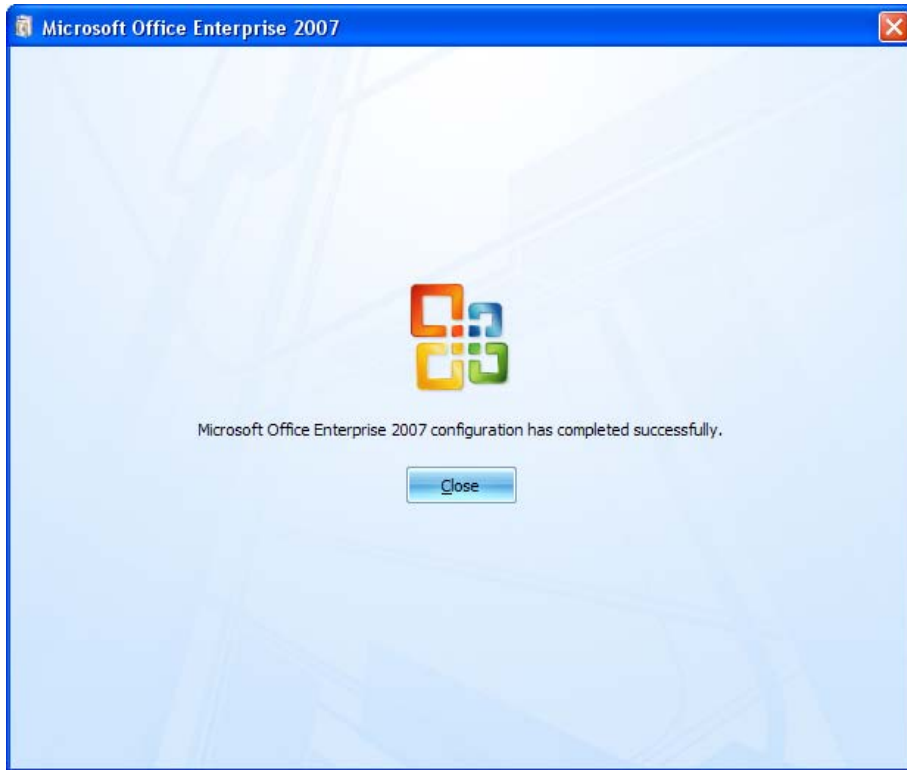
Select '**Run all from My Computer**'

**Next Click Continue**



It will take a few minutes to install.....

When the install is completed click **Close**



Now you can follow the instructions above to associate the file type of TIFF to open with the default application '**Microsoft Office Document imaging**'