

# NEWSPAGER

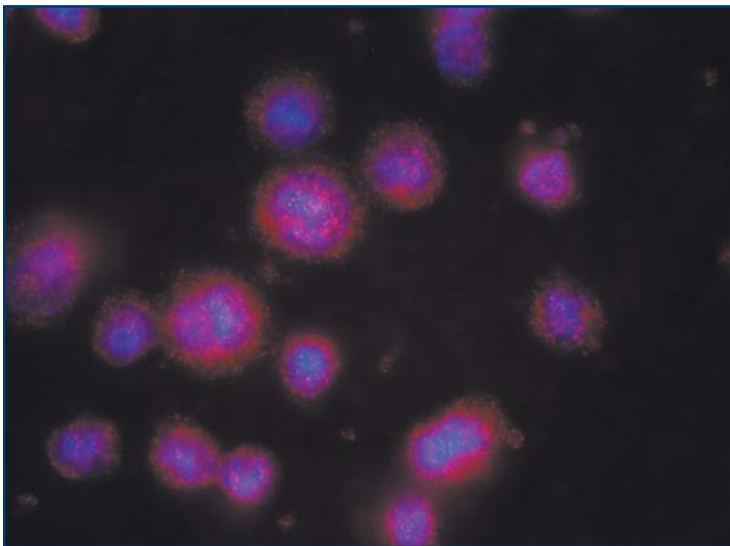
In the tradition of Woman's Medical College of Pennsylvania and Hahnemann Medical College

## Can Serotonin Antagonist Revolutionize Cancer Treatment?

It may seem counterintuitive to believe that an antipsychotic drug used to treat schizophrenia could also treat cancer and psoriasis, but that's exactly what Brad Jameson, Ph.D., Professor of Biochemistry, hopes to prove with clinical trials of the drug fluphenazine.

The reason behind his belief is serotonin, a neurotransmitter in the central nervous system. Dr. Jameson found that white blood cells can't divide without serotonin and that an absence of serotonin leads to their death. Therefore, he believes that a serotonin antagonist such as fluphenazine could be beneficial in diseases caused by the proliferation of white blood cells, specifically hematological cancers and autoimmune diseases.

How would this work? Dr. Jameson explains: "With white blood cells, there's a particular subtype responsible for making antibodies for, say, this week's flu. The appropriate cells that make the right antibodies are activated; then when they're no longer needed, the natural process of programmed cell death occurs. Occasionally, the cell death gets derailed and the cells keep dividing.



A multiple myeloma cancer cell is stained with fluorescently labeled anti-serotonin antibody.

In multiple myeloma [a blood cancer], B cells that originate from the bone marrow go back to the bone marrow and continue to divide, destroying the environment of the bone. It's very painful, you get lesions and in the end, you die. Blocking part of the serotonin kicks the cell into the natural programmed pathway and induces natural cell death. To keep dividing, the cell needs a signal, and when it doesn't get it, it goes into programmed death. In theory. In the test

tube. We'll see what happens when you take a whole sick patient and do it."

That's where the clinical trials come in. A trial using fluphenazine in the treatment of multiple myeloma is expected to begin at the end of November. The drug will be considered successful if there is a statistically significant difference in the number of patients who live versus those who are not treated with the drug. Dr. Jameson explains, "The group you don't treat is going to die. It's 100% terminal."

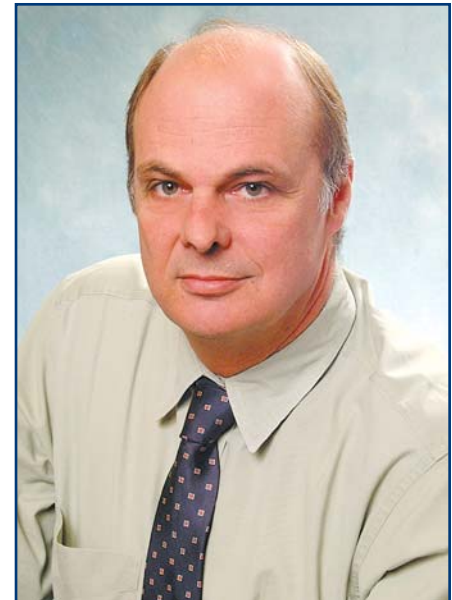
However, he expects to be able to tell if the drug is working long before the Food and Drug Administration's definition of success is met (or not): "In real life, we know because of bone pain. If it decreases, we know it's working, and it should work almost immediately."

Dr. Jameson's other trial will look at fluphenazine's effect on psoriasis, which doctors generally believe to be an autoimmune disease. "Psoriasis goes up to the skin, creating an inflammatory response with big lesions that are very painful," he says. "In the trial, we'll shoot fluphenazine straight into the lesion. If the patient has it on both sides of the body, we'll only treat one side to see if it's working. I have a lot of reason to believe it will work." In his lab work, he explains, all the cells that are activated for psoriasis respond to fluphenazine.

In fact, unlike many drugs that affect the body's immune response, serotonin antagonists work only on *activated* white blood cells; that is, those that hop into action for a specific threat or disease. Current standard of care frequently weakens the body's entire immune system, making patients susceptible to many common infections that they have trouble fighting off. What's worse, they may be on these immunosuppressive drugs for the rest of their lives.

## November 2005

Newsletter Volume 6, No. 8



Dr. Jameson

### INSIDE...

- Alumnae/i News ..... 4
- Update: Dept of Medicine ..... 6
- Arrivals ..... 10



**Samuel K. Parrish, M.D.**  
Associate Dean for Student Affairs

## ***Student Advising and Career Choice – Changing Times and Innovative Methods***

Students enrolling in the College of Medicine in 2005 face a daunting task in making a career choice that will meet personal and professional interests as well as the changing needs of their communities. Significant changes have occurred in the specialty choices of medical school graduates over the past

10 years, with decreasing numbers of students choosing careers in primary care, and a concomitant increase in students choosing specialty paths. Keeping up with changes in student choice and providing appropriate and responsive career counseling has led to the development of innovative methods and resources available to students at Drexel University College of Medicine.

The Office of Student Affairs provides entering medical students with a number of varied tools with which they can gain information and explore different and varying career fields in medicine. Each medical student is given access to and instruction in the use of Careers in Medicine, a web-based career-exploration tool provided by the Association of American Medical Colleges. During Orientation Week, students are introduced to the use of Careers in Medicine, and are directed in completing introductory profiles and exploratory searches of different specialties. Throughout the academic year, student workshops are conducted to demonstrate components of the Careers in Medicine tool.

Another program, CE4MS—Career Exploration for Medical Students, was developed by the College to provide students with the opportunity to interact with physicians from a wide range of medical specialties and subspecialties. Gaining insight into the “day in the life” of specialists allows students to investigate specialties they would ordinarily not be exposed to until the fourth year of medical school training. Additionally, a network of Specialty Interest Groups allows students to interact with faculty and other students with shared interests in specialty areas. Most students attend multiple groups and find these experiences and insights valuable in their decision making.

During the third year of medical school, students choose a Pathway, representing a specialty choice for residency training. The Pathway provides each student with an individual faculty adviser who assists her or him in the residency selection process. Students also utilize the resources, experience and expertise of the Office of Student Affairs in their residency search. The Office of Student Affairs maintains a database of students and match results for several years and can give students a snapshot view of programs matched versus applicant status.

Additional resources provided by the Office of Student Affairs include individual counseling and counseling for “special concerns,”

such as couples matching, and assistance with placement in “early” or advanced (second year) matches. The cooperative support of Pathway directors, individual faculty advisers and Student Affairs personnel has led to a successful match rate of greater than 96 percent in the past several years. We are justly proud of the career counseling services provided to students at Drexel University College of Medicine and continue to be grateful for faculty enthusiasm and participation in this most important task.

**Contact: 215-991-8222**

## ***Board of Trustees Ratifies Dr. Homan as Annenberg Dean***



**Dr. Homan**

In keeping with the bylaws, the Board of Trustees ratified and approved the appointment of Richard V. Homan, M.D., as the Senior Vice President for Health Affairs and Annenberg Dean of Drexel University College of Medicine at the regular board meeting on September 21.

**Contact: 215-762-8900**

## ***Pink Tie Ball Honors Dr. Ari Brooks and Hahnemann University Hospital***

Faculty member Ari Brooks, M.D., Associate Professor of Surgery at Drexel University College of Medicine and Chair of the Cancer Committee at Hahnemann University Hospital, was honored as the recipient of the first Light of Life Award given by the Susan G. Komen Breast Cancer Foundation Philadelphia Affiliate. The organization's first-ever Beacon of Hope award was given to Hahnemann University Hospital. Presented at the Fourth Annual Pink Tie Ball, October 15, the awards were created to recognize healthcare partners that have worked tirelessly to advance the fight against breast cancer.



In 2002, Dr. Brooks established the Drexel University College of Medicine/Tenet Women's Health Project, which pursues the goal of reducing breast cancer mortality and morbidity through public health education and expanded access to screening. Over the past three years, in conjunction with DUCOM and the facilities of Hahnemann University Hospital, he has brought free breast cancer screening and care to approximately 1,000 uninsured women.

**Contact: 215-762-2295**

## Lessons From the Scene in New Orleans

Call Dr. Mike Greenberg prophetic. Nearing mid-October, he was tired of answering questions about his experience with Hurricane Katrina – he wanted to talk about the takeaway, the lessons learned. “In retrospect it just makes you think about the next disaster,” he said. Unbeknownst to all, the future Hurricane Wilma was just about to organize itself into a tropical depression.

Michael Greenberg, M.D., Professor of Emergency Medicine in the College of Medicine, and a Professor in the Drexel University School of Public Health, had seen the devastation of Hurricane Katrina first-hand. Greenberg traveled to New Orleans four days after Katrina hit, at the request of the Louisiana Department of Public Health, to provide expertise in emergency management and medical toxicology. The scene he found was “macabre” – from people wandering around aimlessly to acts of random and not-so-random violence, much of which did not make it to TV.

For several days, Dr. Greenberg traveled out with rescue crews to provide on-site treatment to stranded victims. He also worked with FEMA personnel at a triage station just off the tarmac at New Orleans’ Louis Armstrong International Airport, where people were brought by helicopter or came on foot for treatment. At times, lines stretched four to five miles long and five to ten people wide, as armed guards sought to limit the number entering at one time for transport or treatment.

“People were so desperate to get in, and many were just collapsing in the crowd. It was horrible. I’ve never seen anything like it,” says the veteran ER doctor and medical toxicologist, who served as a medical officer in the U.S. Naval Reserve assigned to the Marine Corps during Operation Desert Storm.

“Most of what we saw was dehydration,” Greenberg continues. “We did see some critical patients, and there were actually a number of cardiac arrest victims treated at the airport station. In addition, there were many instances of people not having access to their medications for long periods, with attendant medical problems.” Greenberg speculates that some of the violence in the city came from people the storm had cut off from anti-psychotic medications.



Lessons learned? Leaving aside the military and political realms, Greenberg talks about better organization and distribution of medical resources. “When these things happen, doctors want to help,” he says. “In our minds, we see ourselves there, treating one patient, moving on to the next – but it’s not like that.” Medical personnel can’t just arrive on the scene, hoping to be put to work. The only way to participate medically is to be part of an organization, he says.

A Disaster Medical Assistance Team is one construct within which doctors can play a role. Part of the National Disaster Medical System of the Federal Emergency Management Agency, there are some 62 DMATs around the country. The teams – each made up of a number of medical doctors, psychiatrists, nurses, paramedics and EMTs in a given region – operate in a quasi-military fashion, Dr. Greenberg says. When they are called upon (in the case of Hurricane Katrina, all 62 teams across the country were mobilized), the federal government pays team members and covers their malpractice insurance.

Dr. Greenberg is hoping to develop an application to start a DMAT based in Philadelphia (none of the existing teams is in our region). In addition to sponsors, a place to train, and equipment, a team requires perhaps 200 people because – unlike the military – members can be excused from a mobilization. He invites anyone who is interested in the project to contact him at [mgreenbe@drexelmed.edu](mailto:mgreenbe@drexelmed.edu).



# ALUMNI ASSOCIATION

## '50s

**Peter B. Riesz, M.D., HU '59, FACR**, received a Special Recognition Award from the Texas Radiological Society at its annual meeting on April 2, 2005. The award was in recognition of his continuing work as historian of the society.

## '60s

**Marie Grabowski, M.D., WMC '66**, joined the Department of Pediatrics at Geisinger's Janet Weis Children's Hospital in Danville, Pa. Dr. Grabowski has been a practicing pediatrician for more than 30 years.

## '70s

**James Ryan, Ph.D., HU '74**, a Professor of Physiology at Temple University School of Medicine, received the 2005 Lindback Award for Distinguished Teaching.

## '80s

**William Dalsey, M.D., MCP '81**, received the Clinical Expertise Award from the New Jersey Chapter of the American College of Emergency Physicians. The award is bestowed on an NJ-ACEP member who has shown outstanding expertise in the hands-on clinical practice of emergency medicine. Dr. Dalsey is the Chairman of Emergency Medicine at Kimball Medical Center in Lakewood, N.J.

**Chester J. Maxson, M.D., MCP '86**, a partner in a five-person gastroenterology private practice in Jupiter, Fla., served a term as Chief of Medicine at Jupiter Medical Center and is currently in the first year of a two-year term as Chief of Staff. He is also a member

of the Board of Trustees and Director of Photodynamic Therapy at the medical center. He was recently awarded fellowship in the American College of Gastroenterology.

**Thomas Lawrence, M.D., MCP '87**, a geriatrics specialist in the Philadelphia suburbs, has opened Main Line Geriatrics for patients age 65 and older. Dr. Lawrence is on staff at Bryn Mawr and Lankenau hospitals, and his practice is part of the Great Valley Health physician network of Main Line Health.

## '90s

**Jeff Gould, M.D., HU '94**, a neurologist in private practice in Bethlehem, Pa., has been named in Consumers' Research Council of America's *Guide to America's Top Physicians* 2004-05 edition.

**Sylvia Allwardt, M.D., HU '96**, an internist, joined General Internal Medicine, a medical group owned by Physicians Alliance Ltd. in Lancaster, Pa.

**Regina Hampton, M.D., MCP '98**, has finished a general surgery residency at Howard University Hospital in Washington, D.C., that included a two-year research fellowship in oncology at the Georgetown University Lombardi Cancer Center. She has joined the medical staff at Doctors Community Hospital in Lanham, Md., and also joined Surgical Associates, Chartered.

## Correction

In our August Alumni Notes, **Sucha Asbell, M.D., WMC '66**, was described as "a radiology oncologist at Einstein Medical Center." Dr. Asbell is actually Chair of the Department of Radiation Oncology at Einstein.

## ***Dr. Wilson A. Foust Celebrated his 100th Birthday on September 4, 2005***

Dr. Wilson A. Foust, a member of the Hahnemann Medical College Class of 1929, celebrated his 100th birthday on September 4 at Brethren Village Retirement Community (in Lancaster County, Pa.), where he lives. Dr. Foust ascribes his longevity to his busy life, having spent 59 years as a practicing physician, 76 years being involved with the Boy Scouts of America, and most recently taking up painting. Dr. Foust and his wife, Betty, were married in 1995. His first wife, also named Betty, died in 1986.

After medical school, Dr. Foust set up shop as a general practitioner in New Holland, Pa. He was on staff at the former St. Joseph Hospital, where he taught emergency medicine, Reading Homeopathic Hospital, Lancaster General Hospital

and the Allergy Clinic. He was also involved in organizing Ephrata Community Hospital. During World War II, Dr. Foust served in the Air Force, receiving three medals.



**Dr. Foust**

Since his retirement in 1990, Dr. Foust has pursued a number of interests: fishing in the Florida Gulf, whittling, writing an autobiography, and then painting. "Every chance I get I like to paint," he says.



## Help Put the Turkey on Someone's Table



The Office of Alumni Relations is pleased again this year to participate in the tradition and sponsorship of the Holiday Turkey Project.

Last year, donations from College of Medicine alumni and friends made it possible to provide 300 turkeys to families helped by the 11th Street Family Health Center. This means that many families were able to enjoy a festive holiday meal because of your financial assistance.

The need is greater than ever this year, and we ask for your support again. A donation of \$30 will help 2 to 3 families, or a donation of \$50 will help 4 to 5 families. If you wish to contribute, please make checks payable to Drexel University Turkey Project and mail to Alumni Holiday Turkey Project 2005, Drexel University College of Medicine Office of Alumni Relations, Paul Peck Alumni Center 60-2, 3141 Chestnut Street, Philadelphia, PA 19104, or send a fax with your credit card information to 215-895-2095.

Turkeys will be distributed on December 15 beginning at 8 a.m. If you would like to volunteer to help, please contact Patty Comey at **215-895-0983** or email [pcomey@drexelmed.edu](mailto:pcomey@drexelmed.edu).

## In Memoriam

### '30s

Charles B. Peterson, Jr., M.D., HU '33  
Sydney S. Norwick, M.D., M.P.H., HU '37  
Lewis H. Kirchhofer, M.D., HU '39

### '40s

Marion Spencer Dressler, M.D., WMC '40  
Joseph A. Sciuto, M.D., HU '40  
Donn E. Bonanno, M.D., HU '49

### '50s

Richard S. Levy, M.D., HU '55

### '60s

Sheila E. Hodgson, M.D., WMC '64  
Nancy B. McWilliams, M.D., WMC '66

### '70s

Deborah A. Perlstein, M.D., MCP '75

**Joelle Pauporte, M.D.**, who was a member of the class of 2003, died on September 5 following a long battle with breast cancer. She is survived by her husband, Joseph "Pepe" Wagner; her 3-year-old daughter, Halle; her mother, Joyce, WMC '68, and father, Jacques; two sisters, Michele, MCPHU '99, and Chantal; and a brother, Pierre.



**Dr. Pauporte**

Dr. Pauporte began medical school at MCPHU in 1999, but transferred after her second year to be closer to her husband.

Based on her own experience of bonding with her daughter through reading, Dr. Pauporte founded the Light One Little Candle Book Drive, [www.lightonelittlecandle.org](http://www.lightonelittlecandle.org), a nonprofit organization that provides new children's books to young parents stricken with cancer.

Memorial contributions may be made to either Light One Little Candle, P.O. Box 1483, Port Washington, NY 11050, or to the Halle Wagner 2005 Educational Trust, c/o Michele Pauporte, 32 East 76th Street, #1404, New York, NY 10021.

Alumni Relations Office: **215-895-0983**  
Send alumni notes to Patty Comey at [pcomey@drexelmed.edu](mailto:pcomey@drexelmed.edu)  
or mail to: College of Medicine Office of Alumni Relations  
Paul Peck Alumni Center 60-2, 3141  
Chestnut Street, Philadelphia, PA 19104  
Website: <http://www.drexelmed.edu/med/ia/alumni/>

## Department of Medicine Moves Ahead with Aggressive Goals



**Dr. Reynolds**

When James C. Reynolds, M.D., was named Chair of Drexel University College of Medicine's Department of Medicine this year, he set an aggressive agenda designed to attain three key goals: (1) creating the best clinical training programs in internal medicine in the region, (2) developing unsurpassed clinical expertise, and (3) developing a highly competitive, clinically relevant research program.

"Our number one goal is to make sure that we are delivering an outstanding educational product," says Dr. Reynolds, who is also Chief of the Division of Gastroenterology and the June F. Klinghoffer Distinguished Professor of Medicine. "Towards that aim, we have recruited longtime leaders who are sincerely committed to education. Drs. Howard Miller, Joseph Boselli, Amy Fuchs and Allan Tunkel are people who have dedicated their lives to education. They go to bed and wake up thinking about

### **Veteran Educator Howard Miller, M.D., Leads Department of Medicine's Clinical Training**



**Dr. Miller**

At the helm of the Department of Medicine's efforts to create the best clinical training program in internal medicine in the region is a veteran educator and clinician who has taught over 10,000 students and residents while practicing at Hahnemann since 1977 – Howard Miller, M.D., the newly appointed Executive Vice Chair for Educational and Clinical Affairs.

"I'm especially proud of the new small team approach in our residency program, which maximizes learning opportunities," says Dr. Miller, the recipient of 26 teaching awards.

"Another great source of pride is the extraordinary commitment of our faculty," he adds. "This is the rare institution where we have very senior faculty members with highly successful practices who have prioritized their lives and careers to support education as the primary mission of the College, and this overflows into the student program as well. We're confident that our students and residents will receive the best clinical education available in this area."

**Contact: 215-762-2229 or [Howard.Miller@DrexelMed.edu](mailto:Howard.Miller@DrexelMed.edu)**

teaching. In our new structure, each of them has a separate team of doctors charged with very specific goals to improve our educational product."

The Department of Medicine's residency program has been enhanced by the introduction of the "Firm System," a small-team approach in which the department's 146 residents are divided into five "firms" of about 30 residents each. Each firm is led by a Chief Resident and Associate Program Director. "The residents work with their firm leaders and with each other throughout their residencies," explains Dr. Reynolds. "This strengthens their education by providing camaraderie, building teamwork, encouraging mentoring, and building reciprocal accountability between the firm leaders and residents."

To further enhance the educational environment, Dr. Reynolds is leading an effort to build relationships and synergy among salaried and non-salaried full-time faculty. Over the past five years, the DUCOM-salaried Department of Medicine faculty at Hahnemann University Hospital has nearly doubled in size, with more than 80 full-time faculty now on board. "We've set very specific policies to ensure that both salaried and non-salaried faculty are integrated in all of our missions," emphasizes Dr. Reynolds. "This includes educational programs, research, new faculty recruitment, the development of satellite facilities, and participation in all social activities. Our faculty members are rewarded for cooperation rather than competition with each other.

"We have a vision of growth that is the catalyst for this effort," he continues. "We believe that the pie is getting bigger, and we must work together to make sure that we get our share. The fact that Hahnemann University Hospital is now at 95 percent occupancy and is opening up 22 more beds this fall is a prime example of the pie increasing."

In response, the Department of Medicine has more than doubled its number of primary care physicians since 2003, and plans to continue that expansion. Growth will be facilitated through the College's satellite operations in East Falls, Manayunk and Marlton, N.J., Dr. Reynolds says. "We also hope to open a new practice on Rittenhouse Square," he adds.

In addition to growth, the Department of Medicine is targeting quality. "We've begun using Six Sigma, a systematic methodology for identifying and eliminating defects, to ensure that we're consistently focused on measuring and improving the quality of our clinical services," Dr. Reynolds says. "In the disciplines of cardiology and women's health, where the College has a long history of excellence, we've retained the expertise of Dr. Katherine Sherif and recruited prominent specialists such as Drs. Howard Eisen and Shelly Hankins to join our team, which will help build our international reputation in these areas."

The department's next focus will be on increasing the quantity and quality of research. Dr. Reynolds expects a Vice Chair for Research to be appointed by the end of 2005 to lead this effort.

**Contact: 215-762-8397**



**Dr. Fleetwood**

**Janet Fleetwood, Ph.D.**, Professor and Vice Chair for Academic Affairs in the Department of Family, Community and Preventive Medicine, has been appointed as a Provost Fellow for the period of October 1, 2005 to May 31, 2006. Dr. Fleetwood will be focusing on enhancing faculty diversity in medicine, engineering and science, comparing Drexel with national benchmarks and reviewing policies and procedures to identify impediments to diversity.

Dr. Fleetwood has also been selected as a 2005-06 Fellow in ELAM (Executive Leadership in Academic Medicine), the national leadership development program for women in academic medicine or dentistry. ELAM is a program of the College of Medicine's Institute for Women's Health and Leadership.



**Dr. Greenberg**

**Michael Greenberg, M.D., MPH**, Director of the Division of Medical Toxicology, Professor of Emergency Medicine and Public Health, has been elected to fellowship status in the American College of Medical Toxicology. Dr. Greenberg was recognized at the recent American Academy of Clinical Toxicology meeting in Orlando, Fla.

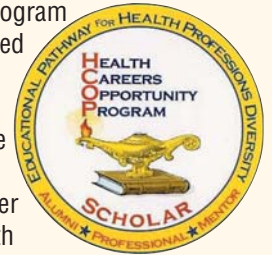
**Andrea Scarry McCurry, MLAS**, Associate Director, University Laboratory Animal Resources, who manages the College of Medicine Animal Facility for Center City and Queen Lane, received the Animal Facility Manager of the Year Award from the Delaware Valley branch of the American Association of Laboratory Animal Science. Her competition included animal facility managers from universities, pharmaceutical companies and biotech companies in the Pennsylvania-Jersey-Delaware area.



**Dr. Schulman**

**Edward S. Schulman, M.D.**, Professor of Medicine and Director of Pulmonary and Critical Care, has been selected for inclusion in the Best Doctors of America 2005-06 database. A peer-review survey by thousands of doctors determines the physicians included in the database. This is the third year that Dr. Schulman has been recognized.

**Gerald Soslau, Ph.D.**, Professor of Biochemistry & Molecular Biology and Associate Dean for Premedical Education, has received a Health Careers Opportunity Program grant, "Pathway to Medicine: A Multi-tiered Approach," from the Health Resources & Services Administration for \$1.3 million over three years. This grant will serve the community and disadvantaged students through a myriad of programs that partner Drexel University College of Medicine with Community College of Philadelphia and a number of public middle schools and high schools to encourage students to enter programs that will prepare them for the health professions.



**Dr. Woodland**

**Mark B. Woodland, M.S., M.D.**, Program Director, Ob/Gyn, has been named President of the Obstetrical Society of Philadelphia for the upcoming year. The Obstetrical Society of Philadelphia is an organization founded in 1868 and devoted to excellence and education in the healthcare of women.

## Can Serotonin Antagonist Revolutionize Cancer Treatment?...continued

Transplant patients are among those who receive this type of immunosuppressive drug; Dr. Jameson hopes his research will also benefit them. Current medicine "impairs the ability of *all* cells to respond to the flu or a bacterial infection. We want to stop the activated cells from doing what we don't want, and not touch the other cells. We want to use nature's mechanism instead of a sledgehammer."

In addition to his work with fluphenazine, Dr. Jameson is also working to develop serotonin antagonists that don't affect the brain. "Most of the drugs that affect serotonin are used to control migraine, depression, a wide variety of

ailments that need to have the drug work in the brain. Not only do we not need the drug to work in the brain, we don't want it to cross the blood-brain barrier. That way, we avoid the complications of behavior [the other drugs can cause]," he says. Fluphenazine, for example, can have a powerful sedative effect.

Immune Control, Inc., the company Dr. Jameson co-founded based on his research, will test fluphenazine in late-stage multiple myeloma at six medical centers. A later trial for psoriasis is also planned.

**Contact: 215-762-6088**

**Christina A. Baessler, MSN, R.N.**, Clinical Coordinator, EPS Research, Adjunct Assistant Professor for Nursing, co-authored an article entitled “Time to Resumption of Driving After Implantation of an Automatic Defibrillator (from the Dual Chamber and VVI Implantable Defibrillator [David] Trial)” that appeared in the March 1, 2005, issue of *The American Journal of Cardiology*.

**Mashiul H. Chowdhury, M.D.**, Assistant Professor in the Department of Medicine, Division of Infectious Diseases, presented a poster concerning “Calculating Activity Indices for Antibiotics Used in the Empiric Treatment of Ventilator-Associated Pneumonia: Does the Data Matter?” at the 43rd Annual Meeting of the Infectious Diseases Society of America on October 7 in San Francisco.

**Gianluca Gallo, Ph.D.**, Assistant Professor, and **Lee Silver**, Research Technician, both of the Department of Neurobiology and Anatomy, co-authored an article entitled “Extracellular Muscle Myosin II Promotes Sensory Axon Formation” that appeared in the July edition of *DNA and Cell Biology*.

**Hans B. Kersten, M.D.**, Assistant Professor of Pediatrics, co-authored an article entitled “Evidence-Based Medicine in Pediatric Residency Programs: Where Are We Now?” The article appeared in the September/October edition of the *Journal of Ambulatory Pediatrics*.



**Dr. Legido**

**Divya Khurana, M.D.**, **Joseph J. Melvin, D.O.**, **Huntley Hardison, M.D.**, **Sabrina Yum, M.D.**, all Assistant Professors of Pediatrics, **Sanjeev Kothare, M.D.**, Associate Professor of Pediatrics, **Ignacio Valencia, M.D.**, Instructor of Pediatrics, **Eric Faerber, M.D.**, Professor of Radiology & Pediatrics, and **Augustin Legido, M.D., Ph.D.**, Professor of Pediatrics, co-authored

an article entitled “Acute Disseminated Encephalomyelitis in Children: Discordant Neurologic and Neuroimaging Abnormalities and Response to Plasmapheresis.” The article was featured in the section of Neurology in the August edition of the *Journal of Pediatrics*.

**Sarah S. Long, M.D., FAAP**, Professor of Pediatrics, is to present a seminar entitled “Practitioners’ Top Ten Questions of an Infectious Disease Specialist, The Best Laboratory Tests to Diagnose Common Infections and Common Immunizations Conundrums,” at the Practical Pediatrics CME course, November 11–13, Amelia Island, Fla.

**Rebecca Miller**, a second-year medical student at the College of Medicine, presented “Analysis of Work Performed in the ED for Patients Admitted to Critical Care Units: Use of Standardized Scoring Systems and Implications for ED Staffing,” at the EuSEM/AAEM Third Mediterranean Emergency Medicine Congress Meeting. The conference was held September 1-5, in Nice, France.

**Maju Matthews, M.D.**, Assistant Professor in the Department of Psychiatry, co-authored a letter to the editor that appeared in the July edition of the *Journal of the American Psychiatric Association* concerning “Dangerous People with Severe Personality Disorders.”



**Dr. Schidlow**

**Daniel V. Schidlow, M.D.**, Professor and Chair, Department of Pediatrics, DUCOM, and Chief Medical and Academic Officer, St. Christopher’s Hospital for Children, co-authored a chapter in *Pediatric Pulmonology: The Requisites in Pediatrics*, entitled “Primary Ciliary Dyskinesia (Immotile Cilia Syndrome–Kartagener Syndrome).”



**Dr. Yeh**

**Julie Yeh, M.D.**, Assistant Professor of Family Medicine, co-authored an article entitled “Metformin as Treatment for Overweight and Obese Adults: A Systematic Review” that was featured in the September/October issue of the *Annals of Family Medicine*.

### **Strong Showing for Drexel Investigators at Symposium of Institute for Human Virology**

Twenty research investigators from the Department of Microbiology and Immunology and the Institute for Molecular Medicine and Infectious Disease gave oral and poster presentations at the International Symposium of the Institute for Human Virology in Baltimore, August 29–September 2, and did a superb job of representing the College of Medicine and Drexel University on the national and international scene, reports Dr. Brian Wigdahl, Professor and Chair of the Department of Microbiology and Immunology, and Director of the Institute for Molecular Medicine.

Six members of the group gave oral presentations: graduate students **Bryan Irish** on “HIV-1 LTR Activity Is Altered by Recruitment of Sp Transcription Factors During Monocytic Differentiation,” and **Vanessa Pirrone**, “The Presence of Mucin Increases the Anti-HIV-1 Activity of the Candidate Microbicide Polyethylene Hexamethylene Biguanide”; postdoctoral fellow **Michael Nonnemacher**, “Characterization of C/EBP Binding Sites Downstream of the Transcriptional Start Site in the HIV-1 LTR”; and faculty members **Tina Kish-Catalone**, “Preclinical Evaluation of Anti-HIV-1 Polybiguanide Vaginal Microbicides in a Murine Model of Toxicity and Inflammation”; **Fred Krebs**, “Use of the Synthetic Copolymer PSMA as a Component in a Combination Microbicide Active Against HIV-1”; and **Evelyn Springhetti**, “Sequence-Specific Vpr Binding to HIV-1 LTR C/EBP Binding Sites and Adjacent Regions.”

### 2006 Woman One Award Announced



Suzanne Roberts, a community leader and humanitarian, was selected as the 2006 Woman One recipient by the Institute of Women's Health and Leadership. The announcement was made at the Showcase of Scholars on September 12; (l-r) Joseph H. Jacovini, Esq., Chairman of the Drexel University Board of Trustees; Ms. Roberts; Emily Pollard, M.D., Woman One 2006 co-chair; Institute Director Lynn Yeakel; and Leslie Anne Miller, Esq., also co-chair. In addition to saluting outstanding leaders, the program raises scholarship money to help fund minority medical students at Drexel University College of Medicine. Currently, five Woman One scholars are studying at the College.

#### November

Nov 4 **Alumni Day for St. Christopher's Hospital for Children: A Day for Education and Camaraderie**  
St. Christopher's Hospital for Children  
Erie Avenue at Front Street, Philadelphia  
Followed by dinner at Radisson Plaza Warwick Hotel  
**Contact: Kathy Rellstab, 215-427-5159**

Nov 8 – 9 **EPS/Arrhythmia Seminar**  
Drexel University College of Medicine  
Center City Hahnemann Campus, Philadelphia  
**Contact: 215-762-8695**

#### December

Dec 1 **Clinical Investigator Workshop for Investigators and Key Research Staff**  
Sheraton Crystal City, Arlington, Va.  
**Contact: Erich Lukas, 215-822-8644**

Dec 10 **The Annual Day of Trauma**  
The Union League of Philadelphia  
140 S. Broad Street  
**Contact: 215-842-6998**

#### January

Jan 27 **9th Annual Conference "A Day with the Newborn: An Investment in Our Future"**  
St. Christopher's Hospital for Children  
Erie Avenue at Front Street, Philadelphia  
**Contact: Kathy Rellstab, 215-427-5159**

### Pediatric Interest Group Mentoring Program



The Pediatric Interest Group of the College of Medicine kicked off the beginning of a new mentoring program for interest group members by hosting a reception on September 26 at St. Christopher's Hospital for Children. The audience included 32 first- and second-year medical students as well as 19 faculty mentors. The program enables each student to be paired with a faculty member who will serve as a mentor. Featured are coordinators for the event (l-r) Dr. Daniel Schidlow, Chair of Pediatrics; Adam Abdulally and Dan Choi, both second-year medical students; and Dr. Laura Smals, Pediatric Clerkship Director.

### Bridging the Gaps



College of Medicine students (l-r) Alon Payenson, Halima Amjad and Adelaide Adjovu worked at the Lutheran Children and Family Services Refugee Resettlement Program and the Liberty Center for Survivors of Torture during a 7-week internship last summer. They were among 31 DUCOM students involved in Bridging the Gaps, a consortium of medical and other healthcare professional schools in Philadelphia, which puts together interdisciplinary teams to conduct service projects in the community. A total of 50 students connected with Drexel University participated, representing nursing, creative arts in therapy, public health, and media arts and design, as well as medicine. For more information, call 215-991-8579.



**Dr. Boselli**

**Joseph M. Boselli, M.D.**, has joined the College of Medicine as an Associate Professor of General Internal Medicine. Dr. Boselli has long been associated with Hahnemann University Hospital and Drexel University College of Medicine. He earned his M.D. and completed his postgraduate training at Hahnemann University Hospital where he was Chief

Resident for Internal Medicine, and had been a Clinical Professor at Hahnemann before his appointment to Drexel University College of Medicine. Previously Dr. Boselli served as Director of the Internal Medicine Residency Program for Presbyterian Medical Center and was Assistant Professor of Medicine at the University of Pennsylvania.

**Miller/Boselli Internal Medicine: 215-587-0325**



**Dr. Huang**

**Yuegiao Huang, Ph.D.**, has joined the College of Medicine as an Assistant Professor of Neurobiology and Anatomy. Dr. Huang's research focuses on neuronal cell signaling and synaptic plasticity, which have important implications in neurodegeneration and injury. Dr. Huang completed his postdoctoral research training in the Program of Brain and

Behavior at the Hospital for Sick Children and Department of Physiology at the University of Toronto in Canada, and earned his Ph.D. in the Molecular, Cellular and Developmental Biology Program at Iowa State University.

**Neurobiology & Anatomy: 215-991-8431**



**Dr. Ko**

**Anita Ko, M.D.**, has joined the College of Medicine as an Assistant Professor of Medicine specializing in pulmonary care. After receiving her undergraduate degree from Ursinus College, Dr. Ko earned her M.D. from MCP Hahnemann School of Medicine and began her postgraduate training with an Internal Medicine Residency at Thomas Jefferson University Hospital.

Most recently Dr. Ko completed a Pulmonary, Critical Care, and Sleep Fellowship at Drexel University College of Medicine.

**Drexel Pulmonary: 215-762-5420**



**Dr. Panna**

**Mark E. Panna Jr., M.D.**, has joined the College of Medicine as an Instructor of General Internal Medicine in the Department of Medicine. After receiving his undergraduate degree from the University of Pittsburgh, Dr. Panna earned his M.D. from MCP Hahnemann School of Medicine. Most recently Dr. Panna completed his postgraduate training with an internship

and residency in Internal Medicine at Drexel University College of Medicine and also participated in cardiology research within the heart failure center.

**Drexel Internal Medicine: 215-762-6900**

## Compliance Corner: Liability for Employing or Contracting With an Excluded Individual or Entity



**Edward G. Longazel**  
Chief Compliance Officer

Drexel University College of Medicine is required to compare applicant names, a roster of current employees and a list of vendors with federal sanction lists to ensure sanctioned (debarred or excluded) individuals are not providing administrative services or care funded by federal healthcare programs.

If a healthcare provider arranges or contracts (by employment or otherwise) with an individual or entity who is excluded by the Office of Inspector General, Department of Health and Human Services, from program participation for the provision of items or services reimbursable under such a federal program, the provider may be subject to liability if they render services reimbursed, directly or indirectly, by such a program. Penalties of up to \$10,000 for each item or service furnished by the excluded individual or entity and listed on a claim submitted for federal program reimbursement, as well as an assessment of up to three times the amount claimed and program exclusion for the provider may be imposed. For liability to be imposed, the statute requires that the

provider submitting the claims for healthcare items or services furnished by an excluded individual or entity "knows or should know" that the person was excluded from participation in the federal healthcare programs (section 1128A(a)(6) of the Act; 42 CFR 1003.102(a)(2)). Providers and contracting entities have an affirmative duty to check the program exclusion status of individuals and entities prior to entering into employment or contractual relationships, or run the risk of liability if they fail to do so.

**We never guess! We ask! Questions? Training requests? Call 215-762-2023**

**DREXEL MED CONFIDENTIAL HOTLINE: 215-762-1010**

## 40 in Class of 2006 Elected

We are pleased to announce that the following seniors have been elected to membership in Alpha Omega Alpha Honor Medical Society, Delta Zeta Chapter. Election to the society is based on academic scholarship, leadership and professionalism.

Arjumand Ali  
Karolyn Bell  
Amanda Carleton  
Harold Carter Davidson  
Anton Delpont  
Peter Derrick  
Tanya Flohr  
Chamindra Gurusinghe  
Colleen Harrington  
Christina Hillson  
Sarah Katel  
Chad Kimball  
Shari Krevitz  
Evgeny Krynetskiy  
Paul Lee  
Linna Li  
Geraldina Lionetti  
Erik Lum  
Scott Murry  
Karen Nguyen

Trevor Olsen  
Valerie Orrico  
Kai Ouye  
Erin Pete  
Jamie Potosek  
Urania Rappo  
Elizabeth Reilly  
Margaret Scheffler  
Dara Shalom  
Angela Shen  
Gretchen Strahle  
Kathryn Suslov  
Erik Sylvin  
Steven Tizio  
Jonathan Turner  
Stephen Vandenhoff  
Jeffrey Widelitz  
Mark Yinger  
Mimi Yun  
Timothy Zelenak

## AMSA/HPG Speaker Encourages Medical Student Activism

Front-burner legislative issues involving healthcare and medical education were the subject of a presentation by Chris McCoy, M.D., National Legislative Affairs Director for the American Medical Student Association, September 28. Dr. McCoy was brought to campus under the auspices of the Drexel University College of Medicine AMSA chapter and DUCOM Healthcare Policy Group.

In his talk, entitled "Shaping the Future of Medicine: How You Can Be Involved," Dr. McCoy touched on universal healthcare, the cost of pharmaceuticals, medical malpractice, global HIV/AIDS, residency work hours, and the cost of medical education, highlighting bills currently on the legislative agenda (see box) and ways that medical students can participate in the process.

Along with contacting legislators, Dr. McCoy encouraged students to take advantage of healthcare policy opportunities AMSA offers throughout the year such as Student Leadership Institutes at regional conferences and Political Leadership Institutes in Washington, D.C.

For more information, contact AMSA Legislative Affairs at [lad@amsa.org](mailto:lad@amsa.org), or speak with any DUCOM AMSA or Healthcare Policy Group representative, or email [DUCOMHealthPolicy@gmail.com](mailto:DUCOMHealthPolicy@gmail.com).

## Call for Nominations

Attention all AOA Alumni and Faculty Members of Drexel University College of Medicine, Hahnemann and MCP:

The Delta Zeta Chapter of Alpha Omega Alpha is requesting nominations of candidates for AOA election. Following are the categories of candidates who will be considered.

**Residents and Fellows:** The chapter may elect to membership three graduate trainees after their first year of training, based on continued achievement and promise.

**Alumnae/i:** After 10 years or more following graduation, alumnae/i who have distinguished themselves in their professional careers and are judged on the basis of achievement to be qualified, may be elected to membership. No more than two alum members per year may be elected.

**Faculty:** A chapter may elect to membership two faculty members each year from the faculty of the College of Medicine who have distinguished themselves in their professional careers and are judged on the basis of achievement to be qualified. Such faculty members must hold an earned doctoral degree.

Submit all nominations to Marie Hartman via email at [mhartman@drexelmed.edu](mailto:mhartman@drexelmed.edu). Please include with your nomination a brief description of the nominee's achievements. In the case of faculty, curriculum vitae must be provided.

### Current Legislative Issues

**States' Right to Innovate in Healthcare (HR 3891).** Provides grants to 5 states to try different approaches to universal coverage for all citizens, and will evaluate cost and effectiveness in 7 years.

**Medicare's Equitable Drugs for Seniors Act (S 445, HR 376).** Allows price negotiation on drugs in Medicare benefit (one of many bills addressing this issue).

**Fair and Reliable Medical Justice Act (S 1337).** Allows states to try different systems to resolve medical malpractice tort cases. Goals: reliable and prompt system, disclosure of errors, enhance patient safety, maintain access to liability insurance.

**Global Health Service Corps (S 850, HR in draft).** Creates "Peace Corps" for doctors and healthcare providers.

**Patient and Physician Safety and Protection Act (S 1297, HR 1228).** Sets 24-hour time limit on shifts and 80 hours per week with whistleblower protections. AMSA wrote this legislation. Also being addressed in Pennsylvania with Pa. Senate bill 331.

**Higher Education Amendment Act (S 1614, HR 609).** Reauthorizes student loan programs, cutting \$11 billion from programs.

Note: For a summary, full text or the latest Congressional action on these and other bills, visit <http://thomas.loc.gov>.

245 N. 15<sup>th</sup> Street, Mail Stop 484  
Philadelphia, PA 19102

## Bulletins:

### Transplant Nephrology Fellowship Accredited

The Fellowship Program in the Transplant Section of the Division of Nephrology at the College of Medicine has received certification by the American Society of Nephrology and the American Society of Transplantation. There are only 36 certified programs in the United States and Canada, and the College of Medicine is the sole recipient in Pennsylvania, Delaware and New Jersey.

### Healthcare Breakthrough for Kids in Illinois

Illinois may become the first state to offer health benefits to all uninsured children. The plan, named "All Kids," would target children in families that earn too little for private coverage but too much to qualify for existing state-funded programs. In order to cover the cost, Governor Rod Blagojevich would revamp state health programs to cut expenses. Initially, the program would extend benefits to more than 125,000 children.

### Doctors Return to Call on the Comforts of Home

Doctors knocking on doors with their black bags used to be a common sight. Now the nearly extinct house call is being resurrected back to the comforts of home. While chronically ill patients make up just 5 percent of Medicare clients, they account for more than 40 percent of the program's total cost. Medicare is conducting a study that will enroll 15,000 patients nationwide to see if house call visits can keep chronic-condition patients out of the hospital, thus saving taxpayers money. The study has begun enrolling in San Antonio and will be monitored in three years to measure costs, patient satisfaction and quality of life, with the goal of seeing a savings of at least 5 percent.

### Historical Research Fellowship Available

Scholars, students and general researchers interested in the history of women in medicine are invited to submit applications for the M. Louise Carpenter Gloeckner Summer Research Fellowship awarded annually by Drexel University College of Medicine's Archives and Special Collections on Women in Medicine. The recipient will receive a \$4,000 stipend for a fellowship term no less than four to six weeks to begin on or after June 1, 2006. The deadline for applications is February 1, 2006. For more information please call **215-842-7331**, or visit <http://archives.drexelmed.edu/fellowship.html>.

## Calendar:

<b>November</b>	<i>American Diabetes Month</i> <i>National Alzheimer's Disease Awareness Month</i> <i>Great American Smokeout</i> <i>National Healthy Skin Month</i>
Nov 4	<i>National Children's Study Event in Montgomery County</i>
Nov 6-12	<i>National Allied Health Week</i>
Nov 10	<b>2nd Annual St. Christopher's Apple Fest</b> , 6-9 pm at the Philadelphia Horticultural Center at Fairmount Park
Nov 20-26	<i>National GERD Awareness Week</i> (Gastroesophageal Reflux Disease)
Nov 24	<i>Thanksgiving</i>
<b>December</b>	<i>National Drunk and Drugged Driving Prevention Month</i>
Dec 1	<i>World AIDS Day</i>
Dec 1-7	<i>National Aplastic Anemia Awareness Week</i>
Dec 2	<b>10th Annual Medical Education Retreat</b> for DUCOM faculty and staff from all clinical sites. Queen Lane Campus, 8:30 am-4:00 pm. Contact: Division of Clinical Education, 215-991-8360
<b>January</b>	<i>Cervical Health Awareness Month</i> <i>National Volunteer Blood Donor Month</i>
<b>February</b>	<i>Heart Health Month</i>
Feb 11	<b>Pediatric AIDS Benefit Concert</b> , produced by DUCOM students. College of Physicians/Mutter Museum. Contact: Marie Hartman, 215-991-8219