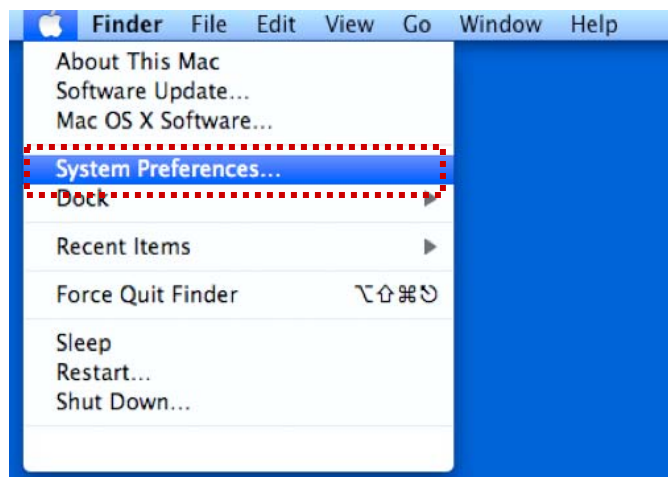


# Instructions for Configuring Mac OSX Dragonfly and Dragonfly2

If you are connecting to **dragonfly2** or **dragonfly**, you will need a WEP encryption key, which you receive when you register your wireless device. If you have not yet registered, please [register your wireless device](https://duapp1.drexel.edu/dragonfly/register.asp) (<https://duapp1.drexel.edu/dragonfly/register.asp>) and write down the two WEP keys that you're given at the end; you'll use farther down this page.

In order to enable the WEP encryption for a Mac OSX machine you need to go through the following steps. Note that the pictures below show only dragonfly, but apply equally to dragonfly2.

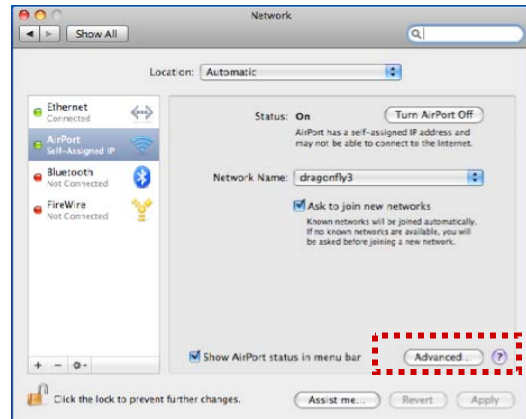
Click the **Apple** button.  
Select **System Preferences**



Click the **Network** icon in the  
**System Preferences** window

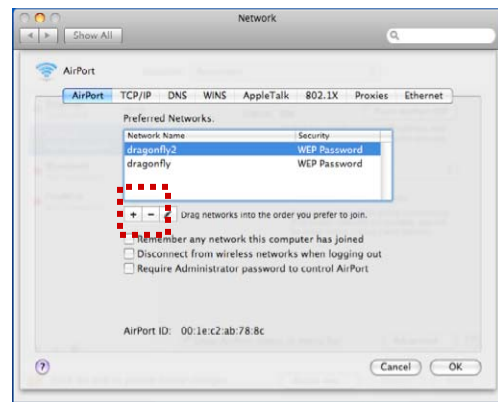


In the Network window select **Airport** and click the **Advanced** button



If **dragonfly** or **dragonfly2** already appear in your list of networks, select it then and click the **Remove (-)** button.

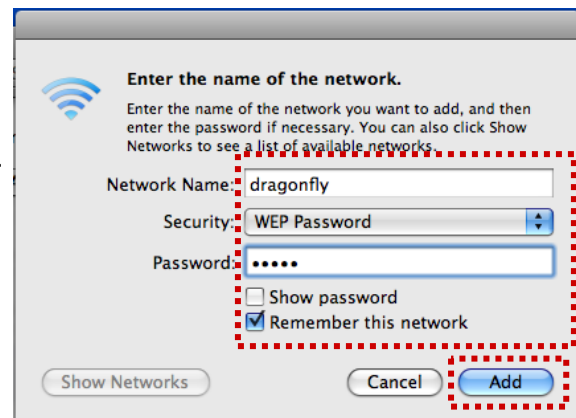
Click the **Add (+)** button to begin adding the new dragonfly and dragonfly2 configuration.



When the **Manually connect to a wireless network** dialog box appears

- Type **dragonfly** into the Network Name box.
- Choose **WEP Password** for the Security
- Enter the **WEP key** given to you on the registration page
- Select **Remember this network**

Click the **Add** button



Click the **OK** button  
Click the **Apply** button