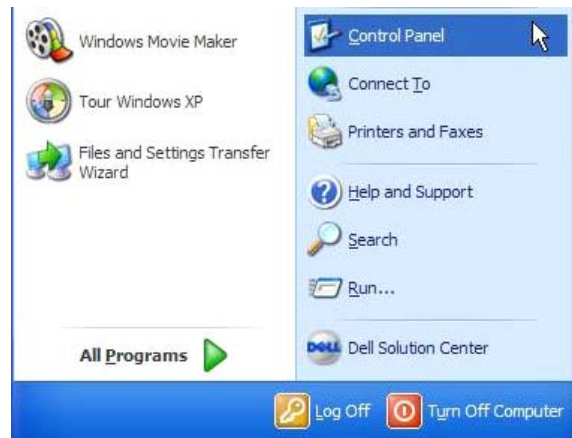


Instructions for Configuring Security on Windows XP Dragonfly and Dragonfly2

If you are connecting to **dragonfly2** or **dragonfly**, you will need a WEP encryption key, which you receive when you register your wireless device. If you have not yet registered, please [register your wireless device](#) and write down the two WEP keys that you're given at the end; you'll use farther down this page.

In order to enable the WEP encryption for a Windows XP machine you need to go through the following steps. Note that the pictures below show only dragonfly, but apply equally to dragonfly2.

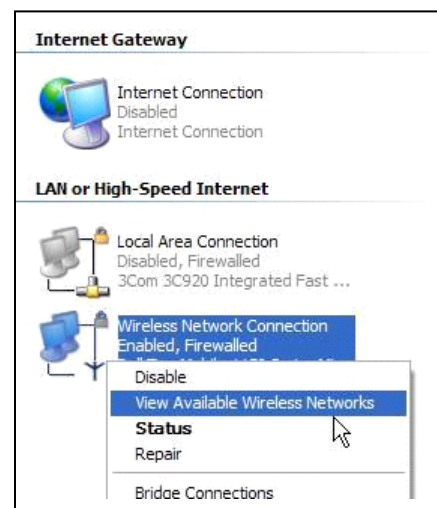
Click on the **Start** button and then click on **Control Panel**.



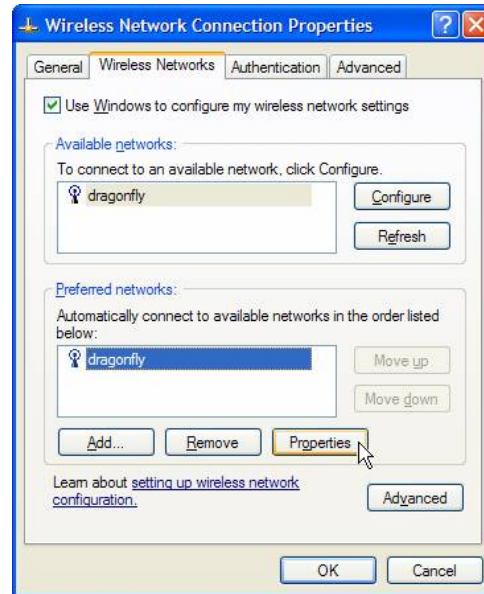
Next click on **Network and Internet Connections**.

Then click on **Network Connections**.

Right-click on the Wireless Network Connection and click on **Properties**.



In the Preferred Networks section of the window select dragonfly then click on the **Properties** button. *Later, you can repeat this step for the dragonfly2 network.*



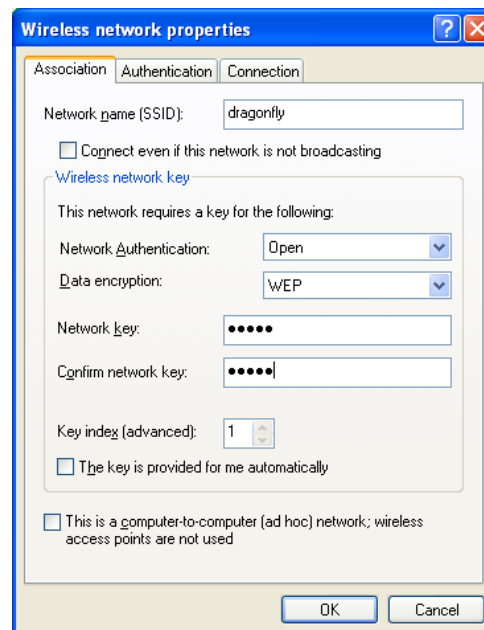
In the Wireless Network Properties window enter **dragonfly** (or **dragonfly2**).

Set Network Authentication to **Open**
Data encryption is **WEP**

Both Network keys are provided on the device registration page.

Note that when you repeat this step for the dragonfly2 network, you'll need to use the longer WEP key.

*If the Wireless Network Key is grayed out, then uncheck "The key is provided for me automatically" box.



Next, click the **Authentication** tab and verify that the checkbox next to "Enable IEEE..." is NOT checked.

Click **OK** to close the Wireless Network properties